

**Wallingford Recreation Facilities Committee**  
**Approved Meeting Minutes**  
**August 15, 2024, 5:00 PM**

Committee members: Shannon Pytlik, Ralph Nimz & Denise Eddy

Public Present: None

Call meeting to order – Shannon called the meeting to order at 5:00

Approve agenda - Agenda approved by consensus

Public comment – Minutes

- Erosion control budget and grant application
  - Shannon is working on the grant. The grant will be discussed with the Selectboard on September 2<sup>nd</sup>. Shannon confirmed with Evan the budget still seems accurate.
- Review Ralph's design for Elfin Lake building layout
  - Ralph added notes to the design.
- Discuss upcoming grant opportunities for building

Ralph will contact a few contractors to get an estimate based on the design. He will do a walk thru.

Code questions – builder needs to submit to fire safety to get a permit so will make sure code is covered.

Shannon mentioned recent plumbing issues. The plan asks the builders to look at the plumbing and install new fixtures.

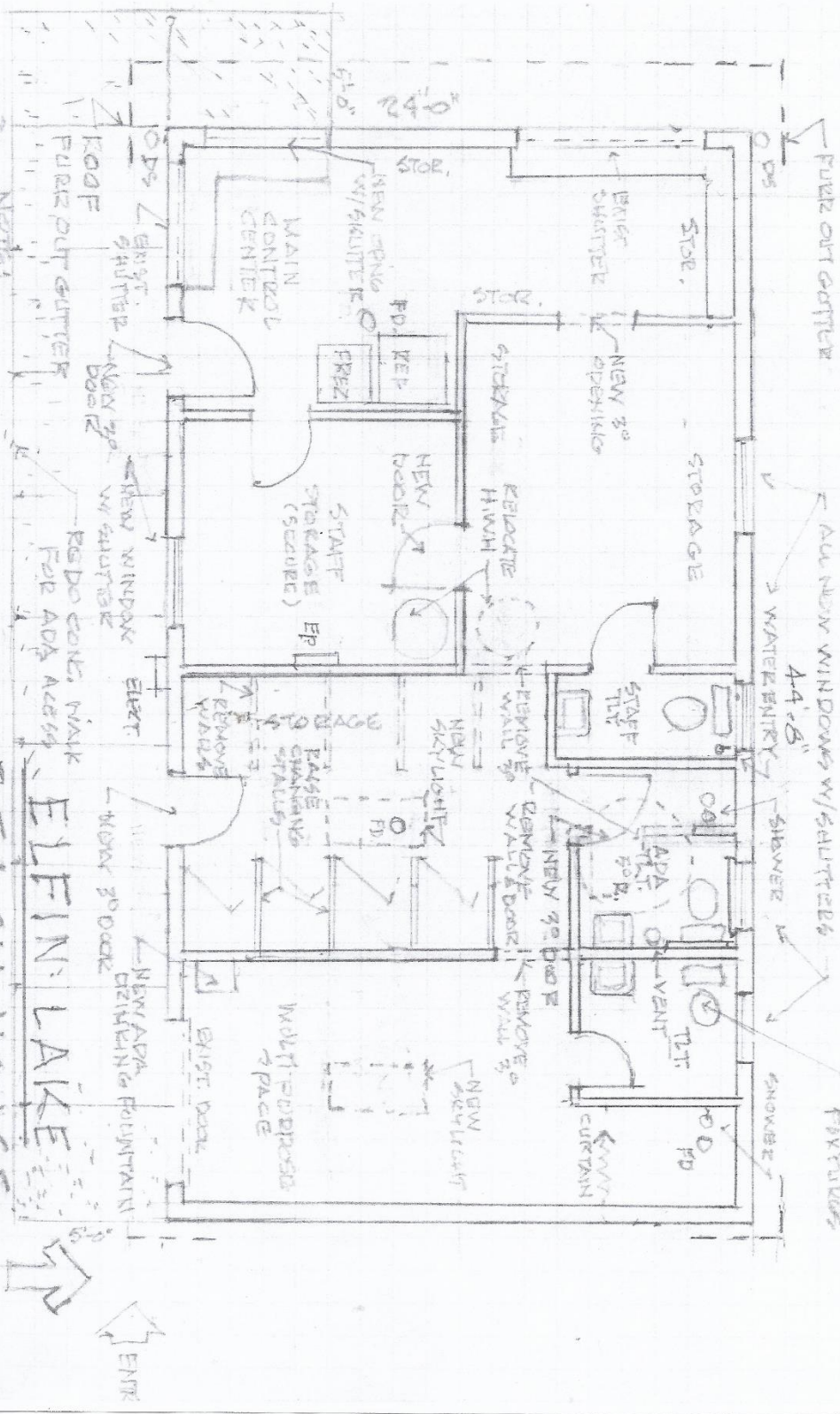
Denise mentioned the entrance to lake from Rt 140 – Does anything at the entrance to do anything? There is a sign, the gates were replaced it seems ok. We can ask Sandi if she thinks anything needs to be done.

Boat storage – we need to find out what our options are for boat storage. The peddle boats are heavy and take up a lot of space. We may want to discuss not offering them in the future due to difficulty of transporting to the water, as well as storage space. We may want to simplify the boats and use kayaks and SUPS that can be stacked vertically on a wall. We will take some photos at Emerald Lake public beach to see how they lock their boats at night. Our understanding is they leave them out for the summer.

- Next Meeting Agenda Building
  - Erosion grant, facilities grant, boat storage, contractor estimates.
- Adjourn at 5:30

Minutes Approved 09/11/24

ADA TI TO HAVE APPROVED WC, GRABBERS, LAV. + MIRROR.  
 - DOOR HARBWARDS TO BE ADA COMPLIANT.



- CLEAN AND REPAIR ALL PLUMBING LINES.
- UP DATE ELECTRICAL SERVICE, WIRING, OUTLETS & FIXTURES.
- CLEAN & PAINT INTERIOR, incl. SLAB & DISPOSED UNDERSIDE OF ROOF & STRUCTURE. 7/1/24

**BEACH HOUSE**

