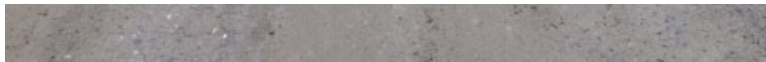


Town of Wallingford, Vermont

Road Stormwater Management Plan



Fully Compliant Segment on Sugar Hill Road



Prepared by:



The Opera House
67 Merchant's Row
Rutland, VT 05701

Inventory and plan funded by the Vermont Agency of Transportation 2019 Better Roads Program.

Table of Contents

Table of Contents	i
Introduction.....	1
Road Erosion Inventory.....	2
Methodology.....	2
Results	3
Road Segments.....	4
Catch Basin Outfalls	5
Implementation Table	6
Very-High Priority Road Segments	6
Potential Sources of Funding.....	6
Municipal Roads Grants-In-Aid	6
Vermont Better Roads Program	7
Compliance Schedule	8
Appendix A: Criteria for Hydrologic-Connectivity and MRGP Standards.....	A-1
Appendix B: Plan Maps	B-1
Appendix C: REI Implementation Table.....	C-1

Introduction

The Municipal Roads General Permit (MRGP), effective January 26, 2018, is required by Act 64, the Vermont Clean Water Act, and the Lake Champlain Phase I TMDL. It is intended to achieve significant reductions in stormwater-related erosion from municipal roads. The MRGP covers discharges of regulated stormwater from town highways, class 1-4 and their rights-of-way as well as municipal stormwater infrastructure associated with town highways.

In accordance with the MRGP, the Town of Wallingford has prepared this Road Stormwater Management Plan (RSWMP). The RSWMP is a customized, multi-year plan designed to stabilize the municipal road drainage system. The plan includes recommendations to bring the road drainage system up to basic maintenance standards and any additional corrective measures to reduce erosion.

This RSWMP contains the municipality's results of the Road Erosion Inventory of all hydrologically-connected roads and Implementation Table. The Implementation Table identifies the municipality's schedule for bringing all non-compliant road segments into compliance no later than December 31, 2036.

Executive Summary

Wallingford has ±50 total road miles.

±18 miles are not hydrologically-connected and therefore are **not** subject to the MRGP.

±32 miles are hydrologically-connected and subject to the MRGP.

±20 miles of hydrologically-connected road and all catch basin outfalls currently **fully meet** MRGP Standards and need to be consistently maintained to continue to meet the standards.

±11 miles shall be brought up to MRGP Standards.

15% or ±1.65 miles shall be brought up to standards over a two year period between 2021 and 2022.

±0.2 miles of Very High Priority Paved Roads with Ditches shall be brought up to MRGP Standards by 12/31/2025.

±1.2 miles of Very High Priority Gravel Roads with Ditches shall be brought up to MRGP Standards by 12/31/2025.

The remaining ±7.95 miles shall be brought up to MRGP Standards by 12/31/2036.

Road Erosion Inventory

The Road Erosion Inventory (REI) of all hydrologically-connected roads is intended to:

1. Verify which municipal road segments are hydrologically connected, and
2. Identify which of those segments meet the operational standards required under the MRGP.

The primary goal of the REI is to establish baseline conditions of road segments and evaluate progress of implementation efforts.

Methodology

In the summer of 2018, the Rutland Regional Planning Commission (RRPC) completed an initial REI for Wallingford. A re-assessment was completed in the summer 2019. RRPC used the 2019 version of the MRGP mobile apps (ArcGIS Collector and Survey123) developed by the Vermont Department of Environmental Conservation to complete the REI. ArcGIS Collector was used to first locate each hydrologically-connected 100 meter (328 foot) road segment or catch basin outlet for inventory. Then Survey123 was used to complete the appropriate REI form for the road segment category (Form A: Gravel and Paved Roads with Ditches; Form B: Class 4 Roads; and Form C: Paved Roads with Catch Basins).

RRPC followed the methods described in the MRGP and 2019 REI Supplements for each road segment category in order to:

1. Field-determine hydrologic connectivity.
2. Evaluate compliance with the MRGP Standards for roadway crown, shoulder berms, road drainage, conveyance areas, driveway/drainage culverts within the right-of-way, and catch basin outlet stabilization.
3. Assign an overall compliance score of Fully Meets, Partially Meets, or Does Not Meet to each segment and catch basin outlet.
4. Note the presence of any features (e.g., historic stone wall, historic large trees, buried utilities, wetlands) that would make it infeasible to implement the MRGP Standards.

Criteria for hydrologic connectivity and MRGP Standards are included in **Appendix A**. Overall MRGP compliance scores are defined as follows:

- Gravel and Paved Roads (Non-Class 4) with Ditches “Fully Meets” – all MRGP Standards are met.
- Gravel and Paved Roads (Non-Class 4) with Ditches “Partially Meets” – one or two MRGP Standards are partially met.
- Gravel and Paved Roads (Non-Class 4) with Ditches “Does Not Meet” – three or more MRGP Standards are partially met or one or more MRGP Standards are not met.

- Paved Roads (Non-Class 4) with Catch Basins are evaluated based on erosion between the catch basin outfall and waters of the state. If the erosion is sheet erosion (less than 1" depth), the outlet "Fully Meets". If the erosion is rill erosion (between 1" and 12" depth), the outlet "Partially Meets". If the erosion is gully erosion (equal to or greater than 12" depth), the outlet "Does Not Meet".
- Class 4 Roads are evaluated based on gully erosion. If gully erosion is present, the overall segment "Does Not Meet". If gully erosion is absent, the overall segment "Fully Meets".

Any municipal road segment or catch basin outfall that scores a "Does Not Meet" or a "Partially Meets" will have to be upgraded to meet the MRGP Standards. Any road segment or outfall that scores a "Fully Meets" needs to be consistently maintained to continue to meet MRGP Standards.

Results

According to the 2015 Wallingford General Highway Map prepared by VTrans, there are 50.19 miles of town roads.

Total Class 2	Total Class 3	Total Class 4	Total Town
3.89	42.12	4.18*	50.19

*0.13 miles are legally Class 3 but have been deemed "Not Up To Standard" and are functionally Class 4 Town Highways.

Of these ±50 road miles, ±32 miles or 519 road segments were initially determined to be hydrologically-connected by the

Vermont Department of Environmental Conservation and were inventoried by the RRPC.

Of the initially identified 519 road segments, RRPC field determined that 4 segments were outside of the Wallingford town limits; 7 segments were not in the ArcGIS Collector app; 7 segments were deleted because there is no longer any physical evidence of a road in the specified location or the road was a private drive; 1 segment was deleted because it was not connected; and 2 segments were added as hydrologically-connected. These adjustments resulted in a total of 502 hydrologically-connected road segments in the REI for Wallingford.

Of the nine (9) catch basin outfalls initially identified as hydrologically-connected by the Vermont Department of Environmental Conservation, 3 were in East Wallingford and 6 were in the Village. RRPC determined that all but 3 road segments draining to hydrologically-connected outfalls were hybrid paved roads with both ditches and catch basins. These adjustments resulted in a total of 1 hydrologically-connected catch basin outfall with 3 hydrologically-connected paved with catch basin road segments in the REI for Wallingford.

The following maps are provided in **Appendix B:**

- Location of all inventoried hydrologically-connected road segments and catch basin outlets.

- Overall MRGP compliance scores by road segment and catch basin outlet.
- MRGP compliance score for each standard (i.e., roadway crown, shoulder berm, road drainage, conveyance areas, driveway/drainage culverts within the right-of-way, catch basin outlet stabilization) by road segment and catch basin outlet.

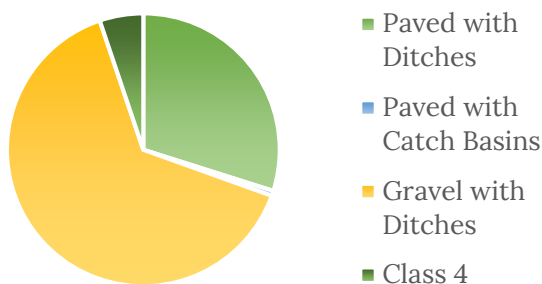
Detailed results of the REI are included in the Implementation Table provided in **Appendix C**. The following provides a brief summary of current compliance:

Road Segments

There are 502 hydrologically-connected road segments totaling ± 31 road miles.

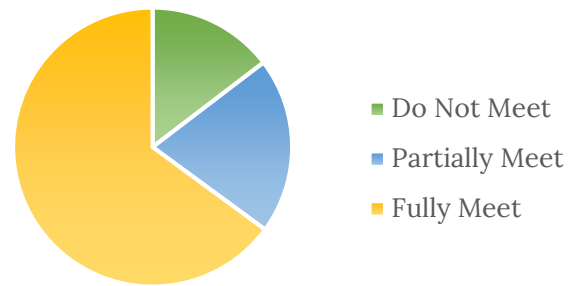
As shown in Figure 1, of these ± 31 miles of road, ± 20 are gravel with ditches; ± 9.3 are paved with ditches; ± 0.2 are paved with catch basins; and ± 1.5 are Class 4.

Figure 1: Hydrologically-Connected Road Types



As shown in Figure 2, 15% of the hydrologically-connected road segments Do Not Meet the MRGP Standards; 20% Partially Meet; 65% Fully Meet.

Figure 2: % Meeting MRGP Standards



This means that ± 11 miles of road in Wallingford either Partially Meet or Do Not Meet the MRGP Standards and will need to be upgraded.

Road segments that did not meet the standards most often lacked a proper crown, lacked drainage ditches, had eroded drainage ditches, or had unstable and eroded conveyances.

Common conditions for segments partially meeting the standards include no crown, only one side of the road having adequate drainage, grader berms, and erosion at drainage and driveway culverts.

Examples of segments that Fully Meet, Partially Meet, and Do Not Meet are presented below.



Fully Meets MRGP Standards



Grader Berm (left) / Eroded Ditch (right)
Does Not Meet MRGP Standards



Grader Berm (left)
Partially Meets MRGP Standards

Catch Basin Outfalls

There is 1 hydrologically-connected catch basin outfall (O1840) for 3 road segments on Depot Street. As shown in the photo below, this outfall discharges directly into the Roaring Brook. There was no erosion present, so the outfall meets the MRGP Standard. However, the RRPC recommended the Town consider a stone header to better protect the pipe in the embankment.



O1840 – 24" Culvert Outfall into Roaring Brook

Implementation Table

The Implementation Table for Wallingford is provided in **Appendix C**. The Implementation Table records the REI scoring and identifies the number of non-compliant road segments the municipality will bring up to the MRGP Standards to achieve compliance no later than December 31, 2036.

Very-High Priority Road Segments

Very-high priority road segments are defined as hydrologically-connected:

1. Paved and gravel road segments with drainage ditches scoring “Does Not Meet” on the REI, on slopes greater than 10%;

2. Paved Roads with Catch Basins scoring “Does Not Meet” on the REI, with field-measured erosion values of 3 cubic yards and greater; and
3. Class 4 road segments scoring “Does Not Meet” on the REI, on slopes greater than 10%.

In Wallingford, 23 hydrologically-connected road segments are ranked as Very-High Priority. They include:

- 3 Paved road segments with drainage ditches
- 20 Gravel road segments with drainage ditches

Potential Sources of Funding

In addition to municipal funds, there are several State programs to assist in funding the work required to bring all hydrologically-connected road segments into MRGP compliance. A summary of the State programs follows.

Municipal Roads Grants-In-Aid

The Department of Environmental Conservation (DEC) has partnered with Vermont’s Regional Planning Commissions on the Municipal Roads Grants-In-Aid Program. This program provides funding for municipalities to implement best management practices (BMPs) on hydrologically-connected roads to support MRGP compliance.

A municipality's funding award depends on the:

- number of hydrologically-connected roads, sorted into five-mile increments; and
- number of participating municipalities.

DEC will reimburse up to 80% of the municipality's documented construction expenses, including in-kind support.

Eligible BMPs include:

- Grass and stone-lined drainage ditches and stone check-dams;
- Turnouts, cross culverts, and other disconnection and infiltration practices;
- Lowering of road shoulders;
- Installation or replacement of drainage culverts and driveway culverts on non-perennial streams with right-of-way and installation of culvert headwalls and outlet stabilization;
- Stabilizing conveyance zones;
- Addressing gully erosion on Class 4 roads; and
- Stabilizing catch basin outlets.

According to the FY20 DEC initial base offer, Wallingford was eligible for a \$12,700 grant.

DEC works closely with the local Regional Planning Commissions to greatly reduce grant administration and reporting efforts for municipalities.

Vermont Better Roads Program

The Agency of Transportation in partnership with the Agency of Natural

Resources provides grant funds to municipalities for planning and erosion control projects that improve water quality and reduce road maintenance costs. There are four categories of grants: A, B, C, and D. All have a 20% local match requirement.

Category A grants are for planning and provide funding to conduct a road erosion inventory, development of an implementation table and identification of priorities for work in compliance with the MRGP. Maximum grant award is \$8,000.

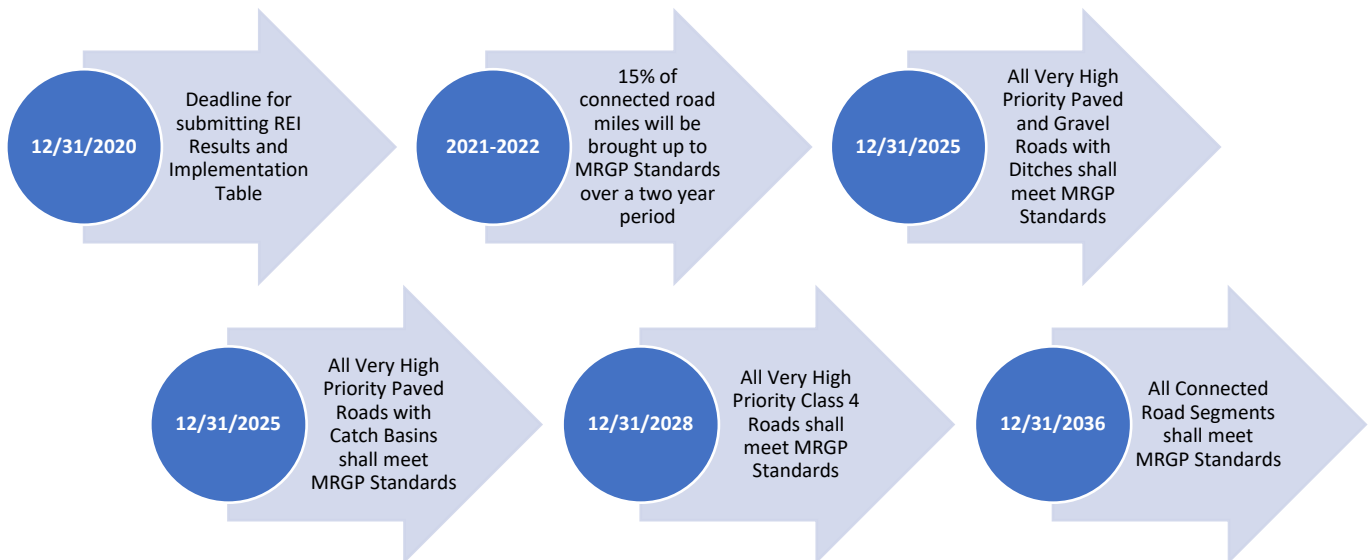
Category B grants are for construction projects that correct an erosion problem and/or installation of stormwater infrastructure that will result in improved water quality. Examples of eligible Category B projects include installation of grass or stone-lined ditches, small (<36") culverts, rain gardens that treat road runoff, and catch basins or drop inlets. Maximum grant award is \$20,000.

Category C grants are for construction projects that correct a streambank, lake shore, or other slope related erosion problems on town roads. Maximum grant award is \$40,000.

Category D grants are for structure and/or culvert upgrade projects. Eligible projects must include installation of a culvert at least 36" in diameter or greater. Maximum grant award is \$60,000.

Compliance Schedule

The current MRGP became effective on January 26, 2018 and shall expire five years from the date of signing or January 2023. A timeline of permit-required compliance dates is presented below.



In Wallingford, there are **±50** total road miles.

- **±18** miles are not hydrologically connected and therefore are not subject to the MRGP.
- **±32** miles are hydrologically connected and subject to the MRGP.
- **±20** miles (324 road segments) currently fully meet MRGP Standards and need to be consistently maintained to continue to meet the standards.
- **±11** miles (175 road segments) shall be brought up to MRGP Standards.
- 15% or **±1.65** miles (26 road segments) shall be brought up to standards over a two year period between 2021 and 2022.
- **±0.2** miles (3 road segments) of Very High Priority Paved Roads with Ditches shall be brought up to MRGP Standards by 12/31/2025.
- **±1.2** miles (20 road segments) of Very High Priority Gravel Roads with Ditches shall be brought up to MRGP Standards by 12/31/2025.
- The remaining **±7.95** miles (126 road segments) shall be brought up to MRGP Standards by 12/31/2036.

Appendix A: Criteria for Hydrologic-Connectivity and MRGP Standards

Hydrologically-Connected Road Segment Determination

For paved roads with catch basins: the catch basin outfall pipe is within 500 feet of a water resource.

For all other municipal roads:

- The municipal road segment is within 100 feet of a water resource;
- The municipal road segment bisects and drains to a water resource;
- The municipal road segment is uphill from, and drains to, a municipal road that bisects or drains to a water resource.

Water resources include: perennial streams, intermittent streams, wetlands, lakes and ponds

Road Stormwater Management Standards – Excerpted from the 2018 MRGP

The standards listed below constitute the minimum required Best Management Practices (BMPs) applicable to all “hydrologically-connected” municipal roads.

It is the municipality’s responsibility to maintain all practices after installation. Road segments not meeting these standards must implement the BMPs listed below in order to meet the required standards.

Feasibility

Municipalities shall implement these standards to the extent feasible. In determining feasibility, municipalities may consider the following criteria: The implementation of a standard listed in Part 6 of this general permit does not require the acquisition of additional state or federal permits or noncompliance with such permits, or noncompliance with any other state or federal law. The implementation of a standard does not require the condemnation of private property; impacts to significant environmental and historic resources, including historic stone walls, historic structures, historic landscapes, or vegetation within 250 feet of a lakeshore; impacts to buried utilities; and excessive hydraulic hammering of ledge.

Standards for All Construction and Soil Disturbing Activities

Following construction and soil disturbance on a hydrologically-connected road segment, all bare or unvegetated areas shall be revegetated with seed and mulch, hydroseeded, or stone lined within 5 days of disturbance of soils, or, if precipitation is forecast, sooner. Projects authorized under the Construction General Permit (CGP 3-9020) or Individual Construction Stormwater Permit (INDC) shall instead comply with the terms and conditions of that permit.

Standards for Gravel and Paved Roads with Ditches

Baseline Standards for Gravel and Paved Roads with Ditches

The following are the required standards for all hydrologically-connected gravel and paved municipal road segments with drainage ditches, whether or not erosion is present. These standards also apply to all new construction and significant upgrades of stormwater treatment practices.

A. Roadway/Travel Lane Standards

1. Roadway Crown
 - a. Gravel roads shall be crowned, in or out-sloped:
Minimum: $\frac{1}{4}$ " per foot
Recommended: $\frac{1}{4}$ " – $\frac{1}{2}$ " per foot or 2% – 4%.
 - b. Paved/ditched roads shall be crowned during new construction, redevelopment, or repaving where repaving involves removal of the existing paving.
Minimum: $\frac{1}{8}$ " per foot or 1%
Recommended: 1% – 2%.
2. Shoulder berms (also called Grader/Plow Berm/Windrows)
Shoulder berms shall be removed to allow precipitation to shed from the travel lane into the road drainage system. Roadway runoff shall flow in a distributed manner to the drainage ditch or filter area and there shall be no shoulder berms or evidence of a "secondary ditch". Shoulder berms may remain in place if the road crown is in-sloped or out-sloped to the opposite side of the road from berm side of road. The shoulder berm standard only applies to gravel roads with drainage ditches.

B. Road Drainage Standards

Roadway runoff shall flow in a distributed manner to grass or a forested area by lowering road shoulders or conversely by elevating the travel lane level above the shoulder. Road shoulders shall be lower than travel lane elevation. If distributed flow is not possible, roadway runoff may enter a drainage ditch, stabilized as follows:

1. For roads with slopes between 0% and 5%: At a minimum, grass-lined ditch, no bare soil. Geotextile and erosion matting may be used instead of seed and mulch. Alternatively, ditches may be stabilized using any of the practices identified for roads with slopes 5% or greater included in Sub-part B.2, below.
Recommended shape: trapezoidal or parabolic cross section with mild side slopes; two foot horizontal per one foot vertical or flatter and 2 foot ditch depth.
2. For roads with slopes 5% or greater but less than 8%:

- a. Stone-lined ditch: minimum 6"- 8" minus stone or the equivalent for new practice construction. Recommended 2-foot ditch depth from top of stone-lined bottom,
 - b. Grass-lined ditch with stone check dams, or
 - c. Grass-lined ditch if installed with disconnection practices such as cross culverts and/or turnouts to reduce road stormwater runoff volume. There shall be at least two cross culverts or turnouts per segment disconnecting road stormwater out of the road drainage network into vegetated areas, or spaced every 160'.
3. For roads with slopes of 8% or greater: Stone-lined ditch.
- a. For slopes greater than or equal to 8% but less than 10%: minimum 6"-8" minus stone or the equivalent for new construction. Recommended 2-foot ditch depth from top of stone-lined bottom.
 - b. For slopes greater than 10%: minimum 6-8" minus stone. Recommended 12" minus stone or the equivalent. Recommended 2-foot ditch depth from top of stonelined bottom.
4. If appropriate, bioretention areas, level spreaders, armored shoulders, and sub-surface drainage practices may be substituted for the above road drainage standards.

C. Drainage Outlets to Waters & Turnouts

Roadway drainage shall be disconnected from waterbodies and defined channels, since the latter can act as a stormwater conveyance, and roadway drainage shall flow in a distributed manner to a grass or forested filter area. Drainage outlets and conveyance areas shall be stabilized as follows:

- 1. Turn-outs - all drainage ditches shall be turned out to avoid direct outlet to surface waters.
- 2. There must be adequate outlet protection at the end of the turnout, based upon slope ranges below. Turnout slopes shall be measured on the bank where the practice is located and not based on the road slope.
 - a. For turnouts with slopes of 0% or greater but less than 5%: stabilize with grass at minimum. Alternatively, stabilize using the practices identified in Sub-parts (b)-(c), below, when possible.
 - b. For turnouts with slopes 5% or greater: stabilize with stone.
 - c. For slopes greater than 5% but less than 10%: minimum 6"-8" minus stone or the equivalent for new construction.

- d. For slopes greater than 10%: minimum: 6-8" minus stone or equivalent for new construction. Recommended 12" minus stone or the equivalent.

Standards if Rill or Gully Erosion is Present on Gravel and Paved Roads with Ditches

The following are the required standards for all gravel and paved roads with ditches where rill or gully erosion is present. These standards also apply to new construction and significant upgrades of stormwater treatment practices.

A. Municipal Culverts

1. Culvert end treatment or headwall required for areas with slopes 5% or greater, if erosion is due to absence of these structures. End treatment or headwall is required for new construction on slopes 5% or greater.
2. Stabilize outlet such that there will be no scour erosion, if erosion is due to absence or inadequacy of outlet stabilization. Stone aprons or plunge pools required for new construction on slopes 5% or greater.
3. Upgrade to 18" culvert (minimum), if erosion is due to inadequate size or absence of structure. In some instances, intermittent streams enter the municipal road drainage network, and in these cases, the Secretary recommends culvert sizing based on in-field and mapping techniques described in the Intermittent Stream Crossing Sizing Guidance, found on the Stormwater Program's website, at: <http://dec.vermont.gov/watershed/stormwater/permit-information-applicationsfees/municipal-roads-program>.
4. Drainage culverts conveying perennial waters are subject to coverage under the DEC Stream Alteration General Permit. MRGP Standards do not apply to culverts conveying perennial waters.
5. A French Drain (also called an Under Drain) or French Mattress (also called a Rock Sandwich) sub-surface drainage practice may be substituted for a cross culvert.

B. Driveway Culverts within the municipal ROW

1. Culvert end treatment or headwall required for areas with slopes of 5% or greater, if erosion is due to absence of these structures. End treatment or headwall is required for new construction.
2. Stabilize outlet such that there will be no scour erosion, if erosion is due to absence or inadequacy of outlet stabilization. Stone aprons or plunge pools required for new construction.
3. Upgrade to minimum 15" culvert, 18" recommended, if erosion is due to inadequate size or absence of structure. In some instances, intermittent streams may enter the municipal road drainage network, and in these cases, the Secretary recommends culvert sizing based on in-field and mapping techniques described on the Stormwater Program's website:

<http://dec.vermont.gov/watershed/stormwater/permit-information-applications-fees/municipal-roads-program>.

4. Driveway culverts conveying perennial waters are subject to coverage under the DEC Stream Alteration General Permit.

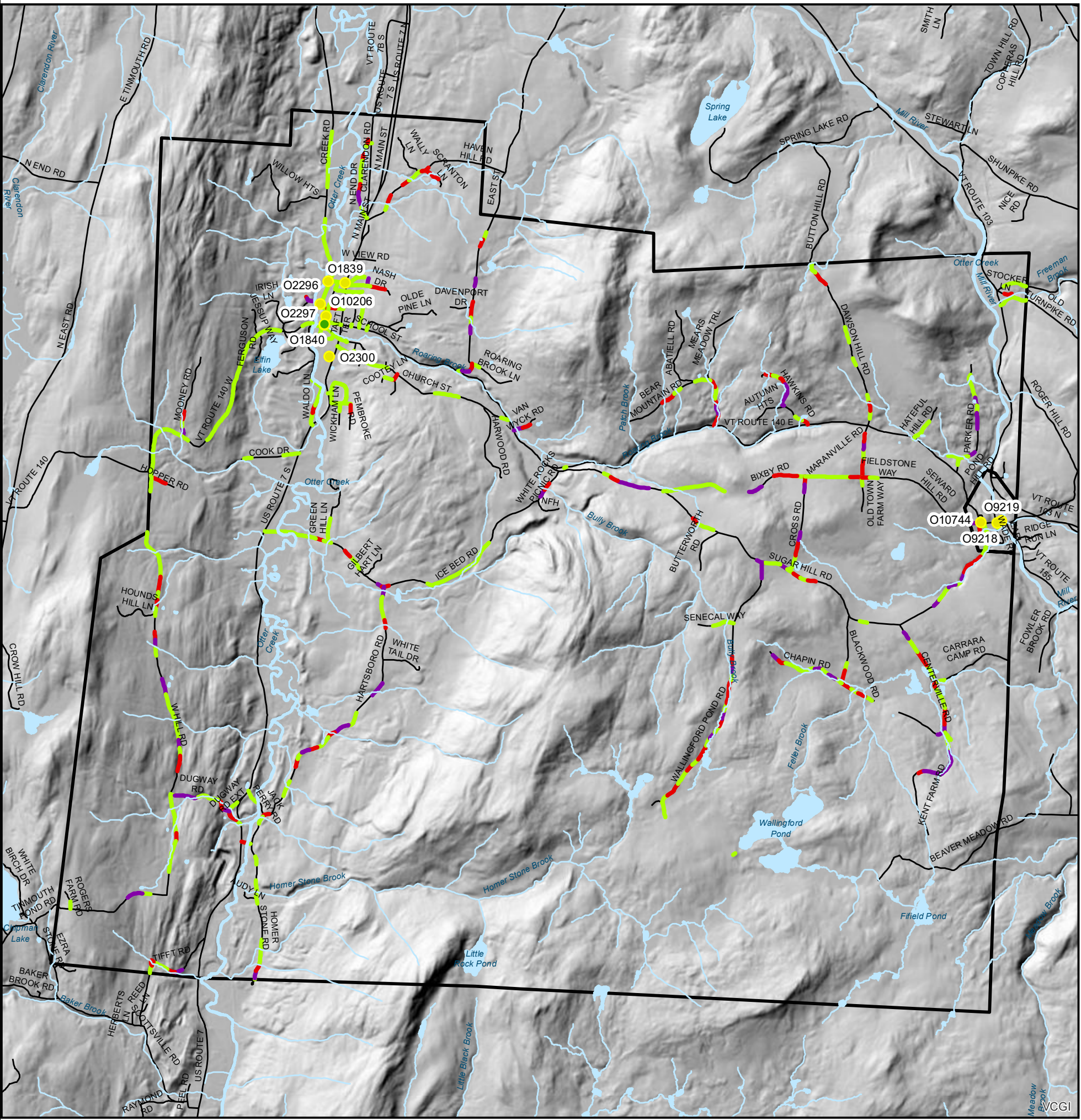
Standards for Paved Roads with Catch Basins

Catch Basin Outlet Stabilization: All hydrologically-connected catch basin outlets shall be stabilized to eliminate all rill and gully erosion. Catch basin outfall stabilization practices include: stone-lined ditch, stone apron, check dams, and culvert header/headwall.

Standards for Connected Class 4 Roads

Stabilize any areas of gully erosion identified in the REI with the practices described above or equivalent practices. Disconnection practices such as broad-based dips and water bars may replace cross culverts and turnouts.

Appendix B: Plan Maps



Final Road Status

Wallingford, Vermont

Road Erosion Inventory 2019

Hydrologically Connected Segments

Legend

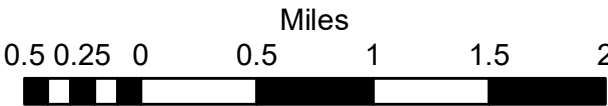
- MRGP Outfalls - Fully Meets
- MRGP Outfalls - Other

— Rivers and Streams

Road Status

- Fully Meets
- Partially Meets
- Does Not Meet
- VT E911 Road Centerlines
- Lakes, Ponds and Major Rivers
- Wallingford Town Boundary

There are a total of nine outfalls in the town of Wallingford. Eight of these were not included in the REI because road segments draining to them are Hybrid segments with both ditches and catch basins. The one true outfall was mapped and inventoried (#08140).



1 inch = 0.83 miles



Road inventory was initially completed in the summer of 2018. Reassessments were performed in the summer of 2019.

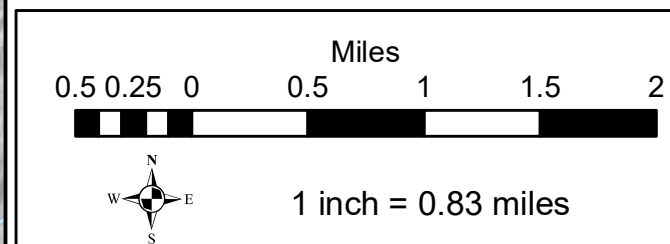
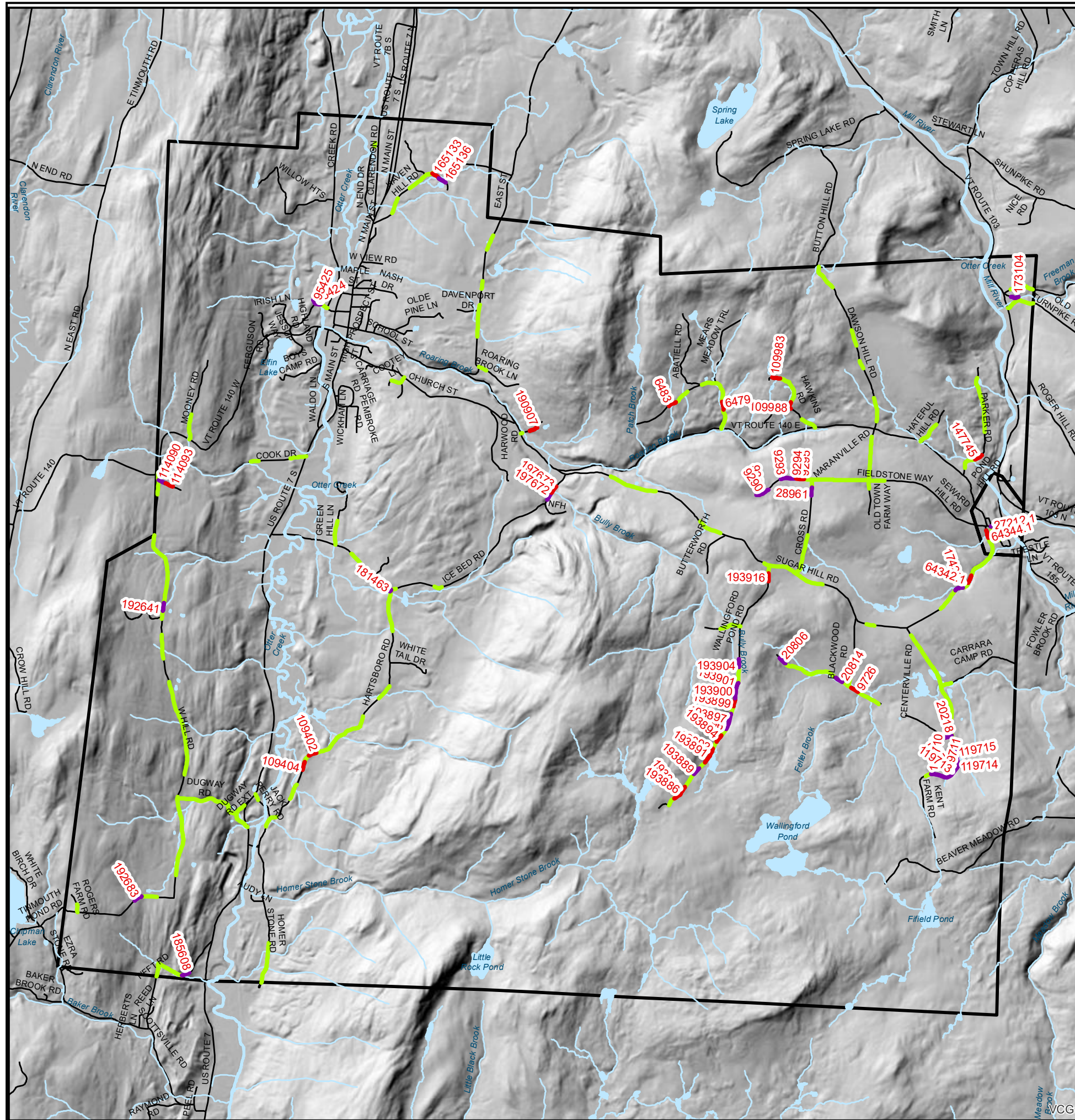


Crown Standard Compliance
Wallingford, Vermont
Road Erosion Inventory 2019
Hydrologically Connected Segments

Legend

Wallingford REI: Crowns

-  Fully Meets
-  Partially Meets
-  Does Not Meet
-  Rivers and Streams
-  VT E911 Road Centerlines
-  Lakes, Ponds and Major Rivers
-  Wallingford Town Boundary



Road inventory was initially completed in the summer of 2018. Reassessments were performed in the summer of 2019.

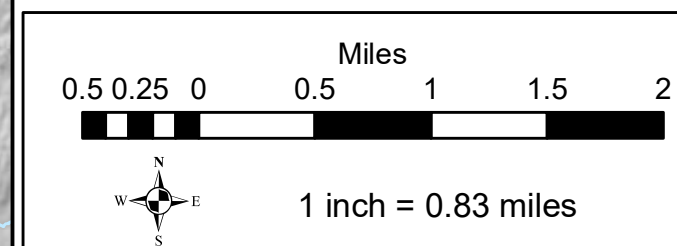
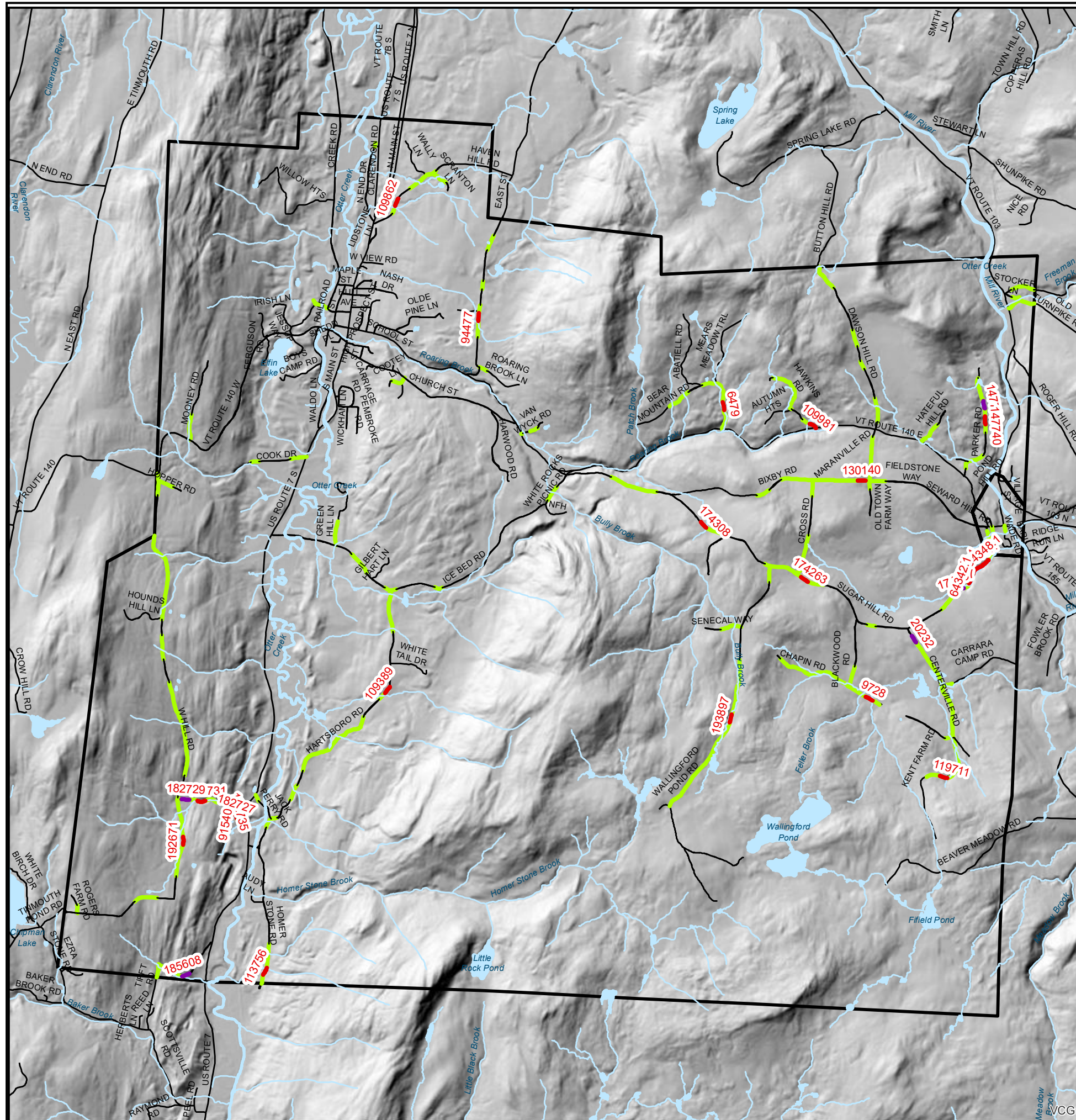


Berm Standard Compliance
Wallingford, Vermont
Road Erosion Inventory 2019
Hydrologically Connected Segments

Legend

Wallingford REI: Berms

-  Fully Meets
-  Partially Meets
-  Does Not Meet
-  Rivers and Streams
-  VT E911 Road Centerlines
-  Lakes, Ponds and Major Rivers
-  Wallingford Town Boundary



Road inventory was initially completed in the summer of 2018. Reassessments were performed in the summer of 2019.



Drainage Standard Compliance

Wallingford, Vermont

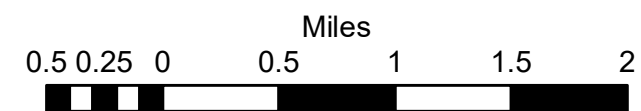
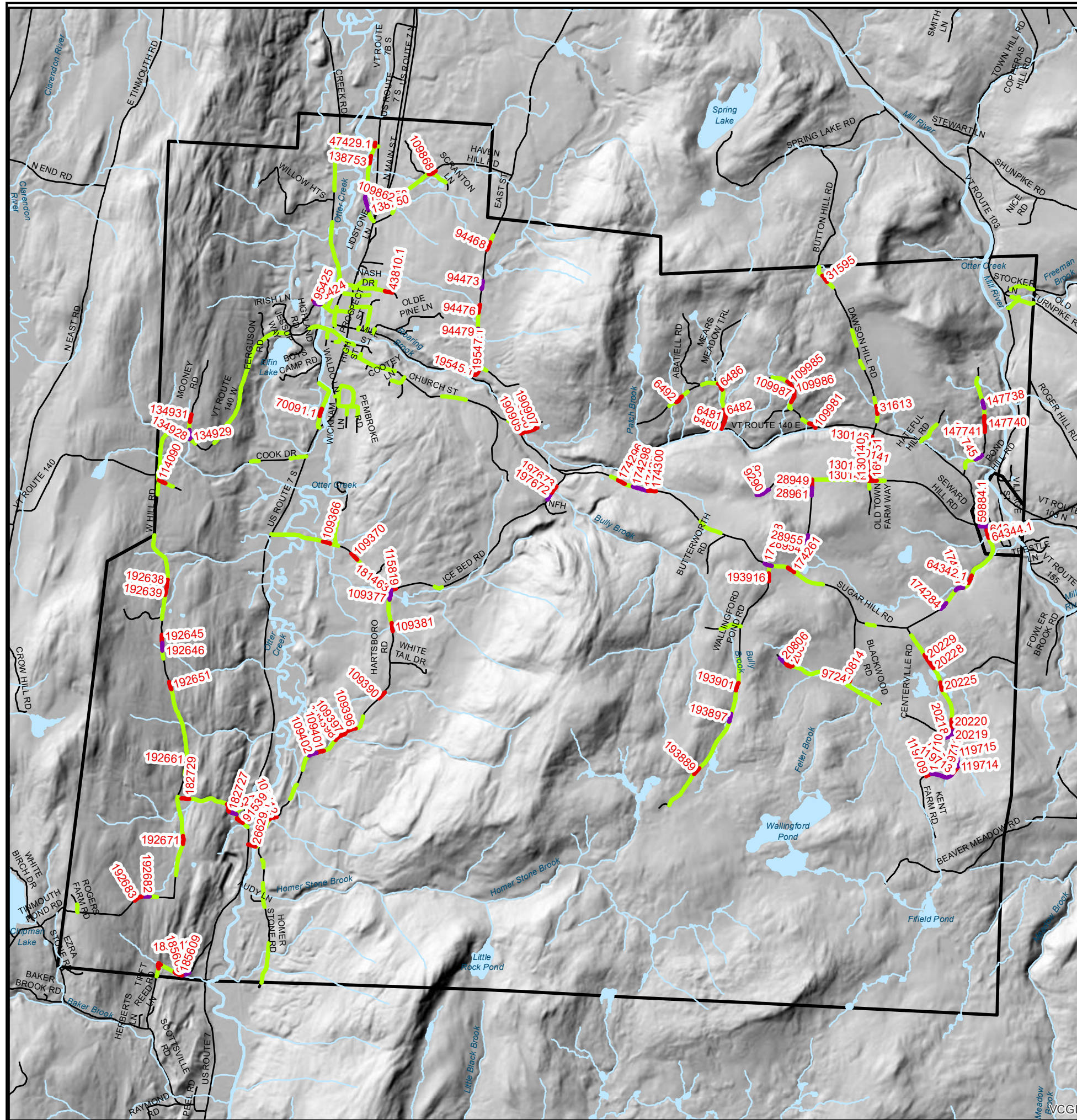
Road Erosion Inventory 2019

Hydrologically Connected Segments

Legend

Wallingford REI: Drainage

- Fully Meets
- Partially Meets
- Does Not Meet
- Rivers and Streams
- VT E911 Road Centerlines
- Lakes, Ponds and Major Rivers
- Wallingford Town Boundary



1 inch = 0.83 miles

Road inventory was initially completed in the summer of 2018. Reassessments were performed in the summer of 2019.

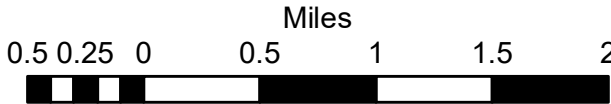
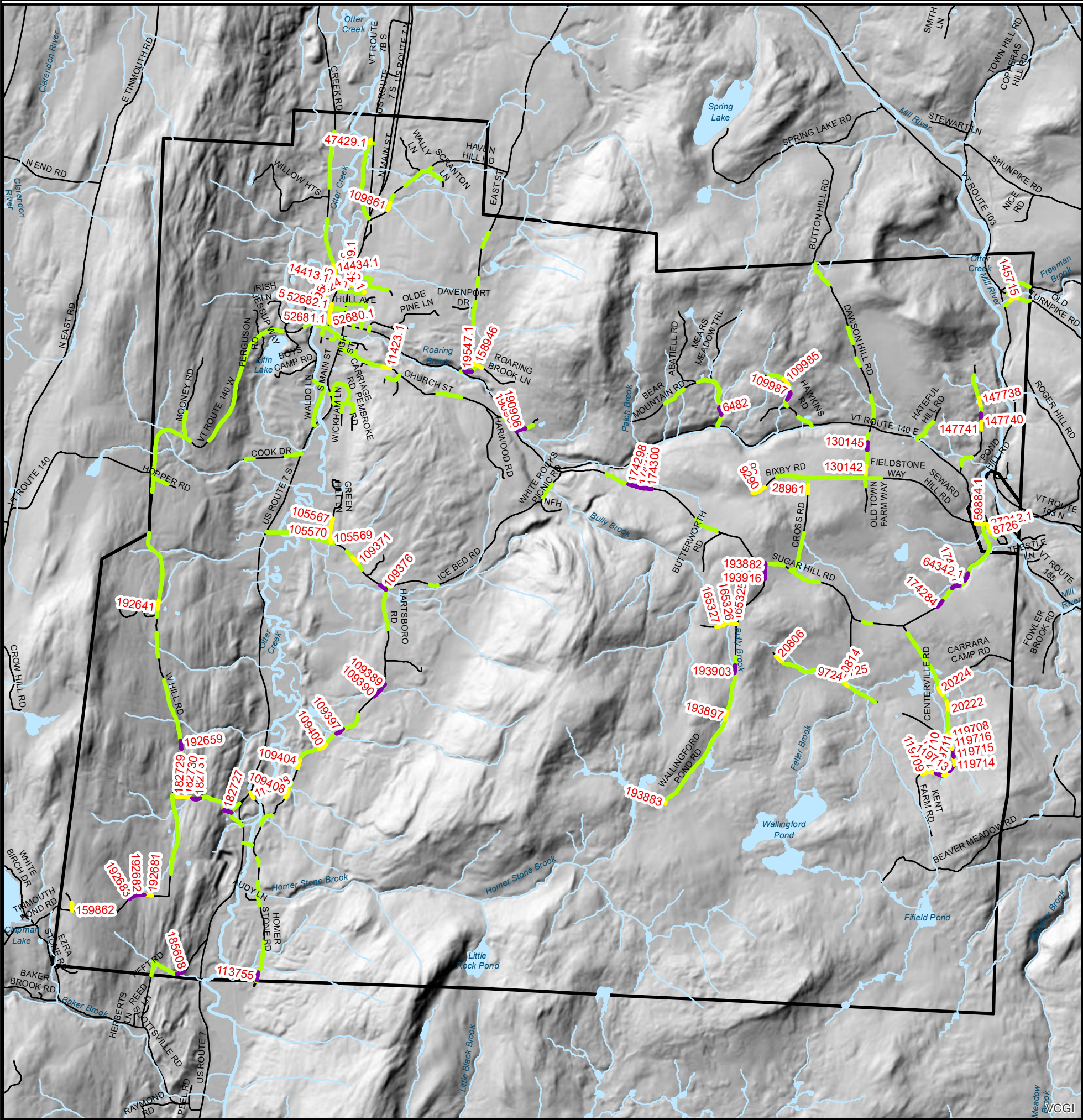


Conveyance Standard Compliance
Wallingford, Vermont
Road Erosion Inventory 2019
Hydrologically Connected Segments

Legend

Wallingford REI: Conveyance

- Fully Meets
- None
- Does Not Meet
- Rivers and Streams
- VT E911 Road Centerlines
- Lakes, Ponds and Major Rivers
- Wallingford Town Boundary



1 inch = 0.83 miles

Road inventory was initially completed in the summer of 2018. Reassessments were performed in the summer of 2019.



Culvert Standard Compliance
Wallingford, Vermont
Road Erosion Inventory 2019
Hydrologically Connected Segments

Legend

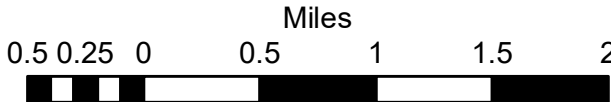
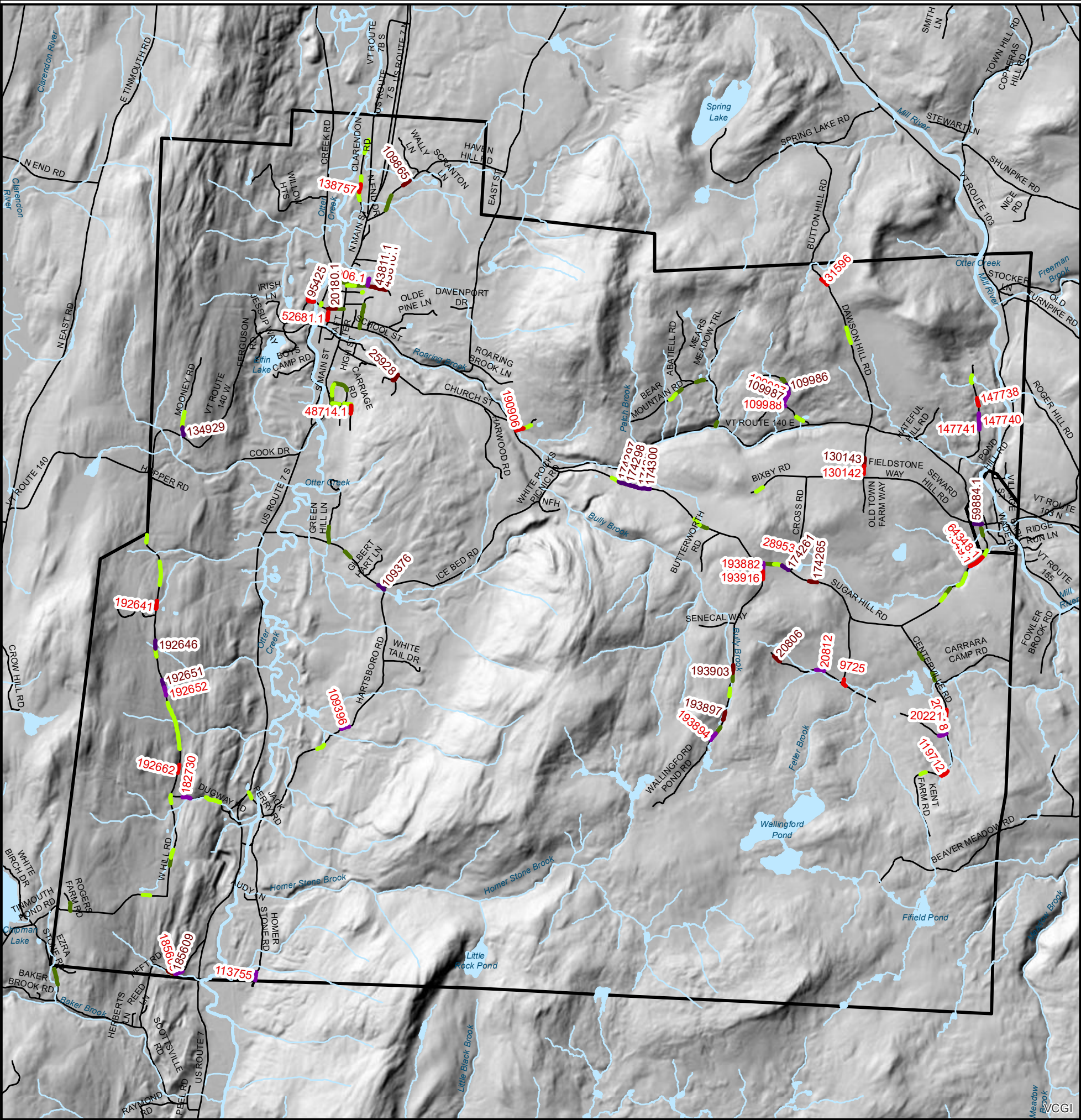
Wallingford REI: Drainage Culverts

- Fully Meets
- Partially Meets
- Does Not Meet

Wallingford REI: Driveway Culverts

- Fully Meets
- Partially Meets
- Does Not Meet

- Rivers and Streams
- Lakes, Ponds and Major Rivers
- Wallingford Town Boundary



1 inch = 0.83 miles

Road inventory was initially completed in the summer of 2018. Reassessments were performed in the summer of 2019.



Appendix C: REI Implementation Table

Seg ID	Road Name	Date	Reason	Road Type	Slope	Crown	Berm / windrow	Drainage	Conveyance	Driveway Culvert	Drainage Culvert	Status	Priority	Schedule
19547.1	EAST STREET TOWN HWY	7/5/2018	Initial Inventory	Paved with open ditches	17.400			P	D			Does Not Meet	Very High	12/31/2025
59884.1	SEWARD HILL RD	8/8/2019	Re Assessment	Paved with open ditches	15.200			D	N	D		Does Not Meet	Very High	12/31/2025
190906	VAN WYCK RD	8/27/2019	Initial Inventory	Paved with open ditches	15.400			P	D		P	Does Not Meet	Very High	12/31/2025
9290	BIXBY RD	8/8/2019	Initial Inventory	Gravel	14.600	D	F	D	N		F	Does Not Meet	Very High	12/31/2025
20806	CHAPIN RD	8/8/2019	Initial Inventory	Gravel	13.200	D	F	D	N	P		Does Not Meet	Very High	12/31/2025
109377	HARTSBORO RD	7/6/2018	Initial Inventory	Gravel	10.200	F	F	D	F			Does Not Meet	Very High	12/31/2025
109389	HARTSBORO RD	7/6/2018	Initial Inventory	Gravel	10.200	F	P		D			Does Not Meet	Very High	12/31/2025
109396	HARTSBORO RD	7/6/2018	Initial Inventory	Gravel	11.000	F	F	P	F		D	Does Not Meet	Very High	12/31/2025
109397	HARTSBORO RD	8/27/2019	Re Assessment	Gravel	12.000	F	F	P	D			Does Not Meet	Very High	12/31/2025
109987	HAWKINS RD	7/10/2018	Initial Inventory	Gravel	13.900	F	F	P	D	D	D	Does Not Meet	Very High	12/31/2025
109988	HAWKINS RD	7/10/2018		Gravel	16.500	P	F	F	F		D	Does Not Meet	Very High	12/31/2025
130145	MARANVILLE RD	7/11/2018	Initial Inventory	Gravel	11.000	F	F	F	D			Does Not Meet	Very High	12/31/2025
134928	MOONEY RD	7/9/2018	Initial Inventory	Gravel	15.000	F	F	D	F			Does Not Meet	Very High	12/31/2025
134929	MOONEY RD	7/9/2018	Initial Inventory	Gravel	14.000	F	F	D	F	D		Does Not Meet	Very High	12/31/2025
147740	PARKER RD	7/10/2018	Initial Inventory	Gravel	15.500	F	P	P	D		D	Does Not Meet	Very High	12/31/2025
64342.1	SUGAR HILL RD	8/8/2019	Re Assessment	Gravel	12.000	P	P	P	D		F	Does Not Meet	Very High	12/31/2025
174300	SUGAR HILL RD	7/9/2018	Initial Inventory	Gravel	13.000	F	F	P	D	D		Does Not Meet	Very High	12/31/2025
181463	TH 35	7/6/2018	Initial Inventory	Gravel	12.100	D	F	D	F			Does Not Meet	Very High	12/31/2025
182727	TH 47	7/5/2018		Gravel	13.000	F	P	D	D			Does Not Meet	Very High	12/31/2025
182731	TH 47	6/14/2019	Re Assessment	Gravel	12.500	F	P	F	D			Does Not Meet	Very High	12/31/2025
192682	W HILL RD	7/5/2018	Initial Inventory	Gravel	19.000	F	F	D	D			Does Not Meet	Very High	12/31/2025
192683	W HILL RD	6/14/2019	Re Assessment	Gravel	18.500	D	F	P	D			Does Not Meet	Very High	12/31/2025
197672	WHITE ROCKS PICNIC RD	7/9/2018	Initial Inventory	Gravel	13.200	D	F	D	F			Does Not Meet	Very High	12/31/2025
6482	BEAR MOUNTAIN RD	7/11/2018	Initial Inventory	Gravel	9.800	F	F	P	D			Does Not Meet	High	
9289	BIXBY RD	8/8/2019	Initial Inventory	Gravel	8.500	D	F	D	N			Does Not Meet	High	
20218	CENTERVILLE RD	7/10/2018	Initial Inventory	Gravel	9.000	D	F	D	F	F	D	Does Not Meet	High	
20219	CENTERVILLE RD	7/10/2018	Initial Inventory	Gravel	8.900	F	F	D	F			Does Not Meet	High	
20232	CENTERVILLE RD	7/10/2018	Initial Inventory	Gravel	5.700	F	D	F	F			Does Not Meet	High	
20814	CHAPIN RD	8/8/2019	Re Assessment	Gravel	5.100	D	F	P	D			Does Not Meet	High	
28955	CROSS RD	7/9/2018	Initial Inventory	Gravel	8.800	F	F	D	F			Does Not Meet	High	
28961	CROSS RD	8/8/2019	Re Assessment	Gravel	9.000	D	F	D	N			Does Not Meet	High	
94473	EAST ST	7/5/2018	Initial Inventory	Gravel	7.000	F	F	D	F			Does Not Meet	High	
94479	EAST ST	7/5/2018		Gravel	5.600	F	F	D	F			Does Not Meet	High	
95425	ELM ST	9/12/2019	Initial Inventory	Gravel	9.300	D	F	D	D	D	P	Does Not Meet	High	
109402	HARTSBORO RD	7/6/2018	Initial Inventory	Gravel	7.000	P	F	D	F			Does Not Meet	High	

Seg ID	Road Name	Date	Reason	Road Type	Slope	Crown	Berm / windrow	Drainage	Conveyance	Driveway Culvert	Drainage Culvert	Status	Priority	Schedule
109986	HAWKINS RD	7/10/2018	Initial Inventory	Gravel	9.700	F	F	P	F	D		Does Not Meet	High	
119710	KENT FARM RD	8/8/2019	Initial Inventory	Gravel	5.700	D	F	D	N			Does Not Meet	High	
119711	KENT FARM RD	8/8/2019	Initial Inventory	Gravel	8.600	D	P	D	D			Does Not Meet	High	
119712	KENT FARM RD	8/8/2019	Initial Inventory	Gravel	8.200	D	F	D	N		P	Does Not Meet	High	
119713	KENT FARM RD	8/8/2019	Initial Inventory	Gravel	9.300	D	F	P	D			Does Not Meet	High	
119714	KENT FARM RD	8/8/2019	Initial Inventory	Gravel	9.300	D	F	D	N			Does Not Meet	High	
119715	KENT FARM RD	8/8/2019	Initial Inventory	Gravel	8.400	D	F	D	D			Does Not Meet	High	
147745	PARKER RD	7/10/2018		Gravel	10.000	P	F	D				Does Not Meet	High	
174258	SUGAR HILL RD	7/9/2018	Initial Inventory	Gravel	6.000	F	F	D	F			Does Not Meet	High	
174261	SUGAR HILL RD	7/9/2018	Initial Inventory	Gravel	8.200	F	F	P		D		Does Not Meet	High	
174287	SUGAR HILL RD	8/8/2019	Re Assessment	Gravel	9.500	D	D	D	D			Does Not Meet	High	
174298	SUGAR HILL RD	7/9/2018	Initial Inventory	Gravel	9.000	F	F	D	D	D		Does Not Meet	High	
174299	SUGAR HILL RD	7/9/2018	Initial Inventory	Gravel	9.500	F	F	D	D	D		Does Not Meet	High	
182730	TH 47	6/14/2019	Re Assessment	Gravel	8.500	F	F	F	N		D	Does Not Meet	High	
185608	TIFFT RD	8/27/2019	Re Assessment	Gravel	8.100	D	D	D	D		D	Does Not Meet	High	
192646	W HILL RD	7/9/2018	Initial Inventory	Gravel	10.000	F	F	D	F	D		Does Not Meet	High	
192651	W HILL RD	7/9/2018	Initial Inventory	Gravel	5.000	F	F	P	F	D		Does Not Meet	High	
192652	W HILL RD	7/9/2018	Initial Inventory	Gravel	5.100	F	F	F	F		D	Does Not Meet	High	
193882	WALLINGFORD POND RD	7/9/2018	Initial Inventory	Gravel	5.000	F	F	F	D	F	D	Does Not Meet	High	
193916	WALLINGFORD POND RD	8/8/2019	Re Assessment	Gravel	8.000	P	F	P	D	F	P	Does Not Meet	High	
1006.1	AMSTONE LN	7/11/2018	Initial Inventory	Paved with open ditches	1.400			F	F		D	Does Not Meet	Moderate	
138750	N END DR	7/5/2018	Initial Inventory	Paved with open ditches	1.000			D	F			Does Not Meet	Moderate	
138758	N END DR	7/5/2018	Initial Inventory	Paved with open ditches	1.000			D	F	F	F	Does Not Meet	Moderate	
64343.1	SUGAR HILL RD	7/10/2018	Initial Inventory	Paved with open ditches	1.500			D	F			Does Not Meet	Moderate	
20812	CHAPIN RD	7/10/2018	Initial Inventory	Gravel	2.500	F	F	F	F		D	Does Not Meet	Moderate	
109376	HARTSBORO RD	7/6/2018	Initial Inventory	Gravel	1.200	F	F	F	D	D	F	Does Not Meet	Moderate	
109390	HARTSBORO RD	7/6/2018	Initial Inventory	Gravel	4.000	F	F	P	D			Does Not Meet	Moderate	
113755	HOMER STONE RD	7/6/2018	Initial Inventory	Gravel	4.000	F	F	F	D		D	Does Not Meet	Moderate	
147738	PARKER RD	7/2/2019	Re Assessment	Gravel	1.500	F	D	D	N	F	P	Does Not Meet	Moderate	
147741	PARKER RD	8/8/2019	Initial Inventory	Gravel	4.600	F	F	P	N		D	Does Not Meet	Moderate	
174284	SUGAR HILL RD	7/10/2018	Initial Inventory	Gravel	4.800	F	F	D	D			Does Not Meet	Moderate	
174297	SUGAR HILL RD	7/9/2018	Initial Inventory	Gravel	3.800	F	F	F	F	D	F	Does Not Meet	Moderate	
182729	TH 47	6/14/2019	Re Assessment	Gravel	4.700	F	D	P	N			Does Not Meet	Moderate	
190905	VAN WYCK RD	8/27/2019	Initial Inventory	Gravel	4.100	F	F	P	D			Does Not Meet	Moderate	
192659	W HILL RD	7/5/2018	Initial Inventory	Gravel	2.400	F	F	F	D		F	Does Not Meet	Moderate	

Seg ID	Road Name	Date	Reason	Road Type	Slope	Crown	Berm / windrow	Drainage	Conveyance	Driveway Culvert	Drainage Culvert	Status	Priority	Schedule
193894	WALLINGFORD POND RD	7/9/2018	Initial Inventory	Gravel	1.900	P	F	F	F		D	Does Not Meet	Moderate	
193897	WALLINGFORD POND RD	8/8/2019	Re Assessment	Gravel	2.600	D	P	D	N	P		Does Not Meet	Moderate	
193903	WALLINGFORD POND RD	7/9/2018	Initial Inventory	Gravel	3.100	F	F	F	D	P		Does Not Meet	Moderate	
19545.1	EAST STREET TOWN HWY	7/5/2018	Initial Inventory	Paved with open ditches	12.200			P	F			Partially Meets	Moderate	
26629.1	HARTSBORO RD	7/6/2018	Initial Inventory	Paved with open ditches	9.000			P	F			Partially Meets	Moderate	
109366	HARTSBORO RD	7/6/2018	Initial Inventory	Paved with open ditches	12.000			P	F			Partially Meets	Moderate	
43810.1	NASH DR	7/11/2018	Initial Inventory	Paved with open ditches	14.500			P	F	P		Partially Meets	Moderate	
43811.1	NASH DR	7/11/2018	Initial Inventory	Paved with open ditches	12.900			F	F	P		Partially Meets	Moderate	
48714.1	PEMBROKE RD	7/3/2019	Re Assessment	Paved with open ditches	5.300			F	F	F	P	Partially Meets	Moderate	
6479	BEAR MOUNTAIN RD	7/11/2018	Initial Inventory	Gravel	10.000	P	P	F	F			Partially Meets	Moderate	
6480	BEAR MOUNTAIN RD	7/11/2018	Initial Inventory	Gravel	16.000	F	F	P	F	F		Partially Meets	Moderate	
6481	BEAR MOUNTAIN RD	7/11/2018	Initial Inventory	Gravel	15.000	F	F	P	F			Partially Meets	Moderate	
6483	BEAR MOUTAIN RD	7/11/2018	Initial Inventory	Gravel	11.000	P	F	F	F			Partially Meets	Moderate	
6486	BEAR MOUTAIN RD	7/11/2018	Initial Inventory	Gravel	7.500	F	F	P	F			Partially Meets	Moderate	
6492	BEAR MOUTAIN RD	8/27/2019	Initial Inventory	Gravel	6.500	F	F	P	F		F	Partially Meets	Moderate	
9294	BIXBY RD	7/11/2018	Initial Inventory	Gravel	5.000	D	F	F	F			Partially Meets	Moderate	
9295	BIXBY RD	7/11/2018	Initial Inventory	Gravel	6.000	P	F	F	F			Partially Meets	Moderate	
9724	BLACKWOOD RD	8/8/2019	Re Assessment	Gravel	7.500	F	F	P	N			Partially Meets	Moderate	
20220	CENTERVILLE RD	7/10/2018	Initial Inventory	Gravel	7.000	F	F	P	F			Partially Meets	Moderate	
20225	CENTERVILLE RD	7/10/2018	Initial Inventory	Gravel	5.500	F	F	P	F			Partially Meets	Moderate	
20228	CENTERVILLE RD	7/10/2018	Initial Inventory	Gravel	5.000	F	F	P	F			Partially Meets	Moderate	
20229	CENTERVILLE RD	7/10/2018	Initial Inventory	Gravel	7.000	F	F	P	F	F		Partially Meets	Moderate	
20807	CHAPIN RD	7/10/2018	Initial Inventory	Gravel	12.100	F	F	P	F			Partially Meets	Moderate	
28949	CROSS RD	7/11/2018	Initial Inventory	Gravel	8.800	F	F	P	F			Partially Meets	Moderate	
28953	CROSS RD	7/9/2018	Initial Inventory	Gravel	5.000	F	F	F	F		P	Partially Meets	Moderate	
28954	CROSS RD	7/9/2018	Initial Inventory	Gravel	5.500	F	F	P	F			Partially Meets	Moderate	
31595	DAWSON HILL RD	7/10/2018	Initial Inventory	Gravel	5.600	F	F	P	F			Partially Meets	Moderate	
31613	DAWSON HILL RD	7/10/2018	Initial Inventory	Gravel	5.800	F	F	P	F			Partially Meets	Moderate	
91539	DUGWAY RD	7/5/2018	Initial Inventory	Gravel	7.900	F	F	P	F			Partially Meets	Moderate	
94468	EAST ST	7/5/2018	Initial Inventory	Gravel	5.000	F	F	P	F			Partially Meets	Moderate	
95424	ELM ST	9/12/2019	Initial Inventory	Gravel	6.200	D	F	P	N			Partially Meets	Moderate	
109370	HARTSBORO RD	7/6/2018	Initial Inventory	Gravel	8.000	F	F	P	F	F		Partially Meets	Moderate	
109381	HARTSBORO RD	7/6/2018	Initial Inventory	Gravel	6.000	F	F	P	F			Partially Meets	Moderate	
109398	HARTSBORO RD	7/6/2018	Initial Inventory	Gravel	7.000	F	F	P	F			Partially Meets	Moderate	
109401	HARTSBORO RD	7/6/2018	Initial Inventory	Gravel	12.000	F	F	P	F			Partially Meets	Moderate	

Seg ID	Road Name	Date	Reason	Road Type	Slope	Crown	Berm / windrow	Drainage	Conveyance	Driveway Culvert	Drainage Culvert	Status	Priority	Schedule
109412	HARTSBORO RD	7/6/2018	Initial Inventory	Gravel	5.000	F	F	P	F			Partially Meets	Moderate	
109862	HAVEN HILL RD	7/5/2018	Initial Inventory	Gravel	7.800	F	P	P	F	F		Partially Meets	Moderate	
109868	HAVEN HILL RD	7/5/2018	Initial Inventory	Gravel	5.200	F	F	P	F			Partially Meets	Moderate	
109981	HAWKINS RD	7/11/2018	Initial Inventory	Gravel	8.200	F	P	P	F			Partially Meets	Moderate	
109983	HAWKINS RD	7/10/2018	Initial Inventory	Gravel	5.600	P	F	F	F			Partially Meets	Moderate	
109985	HAWKINS RD	7/2/2019	Re Assessment	Gravel	11.200	F	F	P	N	F		Partially Meets	Moderate	
113756	HOMER STONE RD	7/6/2018	Initial Inventory	Gravel	6.000	F	P	F	F			Partially Meets	Moderate	
114090	HOPPER RD	7/6/2018	Initial Inventory	Gravel	8.000	D	F	P	F			Partially Meets	Moderate	
114093	HOPPER RD	7/6/2018	Initial Inventory	Gravel	8.700	P	F	F	F			Partially Meets	Moderate	
130140	MARANVILLE RD	7/11/2018	Initial Inventory	Gravel	8.600	F	P	P	F			Partially Meets	Moderate	
130141	MARANVILLE RD	7/11/2018	Initial Inventory	Gravel	8.300	F	F	P	F			Partially Meets	Moderate	
130142	MARANVILLE RD	8/8/2019	Re Assessment	Gravel	6.100	F	F	P	N		P	Partially Meets	Moderate	
130143	MARANVILLE RD	7/11/2018	Initial Inventory	Gravel	8.000	F	F	P	F	P		Partially Meets	Moderate	
130146	MARANVILLE RD	7/11/2018	Initial Inventory	Gravel	8.500	F	F	P	F			Partially Meets	Moderate	
134931	MOONEY RD	7/9/2018	Initial Inventory	Gravel	14.000	F	F	P	F		F	Partially Meets	Moderate	
165136	SCRANTON LN	7/5/2018	Initial Inventory	Gravel	6.300	D	F	F	F			Partially Meets	Moderate	
64348.1	SUGAR HILL RD	7/10/2018	Initial Inventory	Gravel	9.000	F	P	F	F		P	Partially Meets	Moderate	
64349.1	SUGAR HILL RD	7/10/2018		Gravel	9.000	F	P	F	F		P	Partially Meets	Moderate	
64350.1	SUGAR HILL RD	8/8/2019	Re Assessment	Gravel	11.200	F	P	F	F			Partially Meets	Moderate	
174265	SUGAR HILL RD	7/9/2018	Initial Inventory	Gravel	5.000	F	F	F	F	P		Partially Meets	Moderate	
174296	SUGAR HILL RD	7/9/2018	Initial Inventory	Gravel	10.800	F	F	P	F		F	Partially Meets	Moderate	
182735	TH 47	7/5/2018	Initial Inventory	Gravel	9.700	F	P	P	F			Partially Meets	Moderate	
185609	TIFFT RD	7/6/2018	Initial Inventory	Gravel	13.000	F	F	P	F	P	F	Partially Meets	Moderate	
185612	TIFFT RD	7/6/2018	Initial Inventory	Gravel	10.000	F	F	P	F			Partially Meets	Moderate	
190907	VAN WYCK RD	8/27/2019	Initial Inventory	Gravel	12.500	P	F	P	F		F	Partially Meets	Moderate	
192638	W HILL RD	7/9/2018	Initial Inventory	Gravel	11.100	F	F	P	F		F	Partially Meets	Moderate	
192639	W HILL RD	7/9/2018	Initial Inventory	Gravel	8.600	F	F	P	F			Partially Meets	Moderate	
192641	W HILL RD	8/27/2019	Initial Inventory	Gravel	6.400	D	F	F	N		P	Partially Meets	Moderate	
192645	W HILL RD	7/9/2018	Initial Inventory	Gravel	6.400	F	F	P	F			Partially Meets	Moderate	
192661	W HILL RD	7/5/2018	Initial Inventory	Gravel	5.200	F	F	P	F			Partially Meets	Moderate	
192671	W HILL RD	7/5/2018	Initial Inventory	Gravel	5.000	F	P	P	F			Partially Meets	Moderate	
193889	WALLINGFORD POND RD	7/9/2018	Initial Inventory	Gravel	8.000	D	F	P	F			Partially Meets	Moderate	
193899	WALLINGFORD POND RD	7/9/2018	Initial Inventory	Gravel	7.200	P	F	F	F			Partially Meets	Moderate	
193900	WALLINGFORD POND RD	7/9/2018	Initial Inventory	Gravel	8.500	D	F	F	F		F	Partially Meets	Moderate	
193901	WALLINGFORD POND RD	7/9/2018	Initial Inventory	Gravel	11.000	D	F	P	F			Partially Meets	Moderate	

Seg ID	Road Name	Date	Reason	Road Type	Slope	Crown	Berm / windrow	Drainage	Conveyance	Driveway Culvert	Drainage Culvert	Status	Priority	Schedule
193904	WALLINGFORD POND RD	7/9/2018	Initial Inventory	Gravel	6.800	D	F	F	F			Partially Meets	Moderate	
20180.1	ELM ST	7/11/2018	Initial Inventory	Paved with open ditches	2.100			F	F	P		Partially Meets	Low	
138753	N END DR	7/5/2018	Initial Inventory	Paved with open ditches	2.800			P	F			Partially Meets	Low	
138757	N END DR	7/5/2018	Initial Inventory	Paved with open ditches	4.300			F	F		P	Partially Meets	Low	
52681.1	RAILROAD ST	9/12/2019	Initial Inventory	Paved with open ditches	0.900			F	N		P	Partially Meets	Low	
70091.1	WALDO LN	7/6/2018	Initial Inventory	Paved with open ditches	0.800			P	F			Partially Meets	Low	
9293	BIXBY RD	7/11/2018	Initial Inventory	Gravel	2.200	D	F	F	F			Partially Meets	Low	
9725	BLACKWOOD RD	8/8/2019	Re Assessment	Gravel	1.300	F	F	F	N		P	Partially Meets	Low	
9726	BLACKWOOD RD	7/10/2018		Gravel	3.500	P	F	F	F			Partially Meets	Low	
9728	BLACKWOOD RD	7/10/2018	Initial Inventory	Gravel	1.200	F	P	F	F			Partially Meets	Low	
20221	CENTERVILLE RD	7/10/2018	Initial Inventory	Gravel	2.300	F	F	F	F		P	Partially Meets	Low	
25928	COOTEY LN	7/12/2018	Initial Inventory	Gravel	2.800	F	F	F	F	P		Partially Meets	Low	
31596	DAWSON HILL RD	7/10/2018	Initial Inventory	Gravel	2.100	F	F	F	F		P	Partially Meets	Low	
91540	DUGWAY RD	7/5/2018	Initial Inventory	Gravel	2.000	F	P	F	F			Partially Meets	Low	
94476	EAST ST	7/5/2018	Initial Inventory	Gravel	1.700	F	F	P	F			Partially Meets	Low	
94477	EAST ST	7/5/2018	Initial Inventory	Gravel	2.600	F	P	F	F			Partially Meets	Low	
109404	HARTSBORO RD	8/27/2019	Re Assessment	Gravel	4.000	P	F	F	N			Partially Meets	Low	
109865	HAVEN HILL RD	7/5/2018	Initial Inventory	Gravel	1.000	F	F	F	F	P		Partially Meets	Low	
27212.1	HENRY	8/8/2019	Re Assessment	Gravel	3.300	D	F	F	N			Partially Meets	Low	
115819	ICE BED RD	7/6/2018	Initial Inventory	Gravel	4.500	F	F	P	F			Partially Meets	Low	
119709	KENT FARM RD	8/8/2019	Initial Inventory	Gravel	4.400	F	F	P	N		F	Partially Meets	Low	
47429.1	PALMER PL	9/12/2019	Initial Inventory	Gravel	0.600	F	F	P	N		F	Partially Meets	Low	
165133	SCRANTON LN	7/5/2018	Initial Inventory	Gravel	3.500	P	F	F	F			Partially Meets	Low	
165451	SEWARD HILL RD	7/11/2018	Initial Inventory	Gravel	3.700	F	F	P	F			Partially Meets	Low	
173104	STOCKER LN	7/10/2018	Initial Inventory	Gravel	2.600	D	F	F	F			Partially Meets	Low	
64344.1	SUGAR HILL RD	7/10/2018	Initial Inventory	Gravel	3.000	P	F	P	F	F		Partially Meets	Low	
174263	SUGAR HILL RD	7/9/2018	Initial Inventory	Gravel	3.200	F	P	F	F			Partially Meets	Low	
174308	SUGAR HILL RD	7/9/2018	Initial Inventory	Gravel	3.000	F	P	F	F		F	Partially Meets	Low	
192662	W HILL RD	7/5/2018	Initial Inventory	Gravel	1.200	F	F	F	F		P	Partially Meets	Low	
193885	WALLINGFORD POND RD	7/9/2018	Initial Inventory	Gravel	0.700	P	F	F	F			Partially Meets	Low	
193886	WALLINGFORD POND RD	7/9/2018	Initial Inventory	Gravel	0.800	P	F	F	F			Partially Meets	Low	
193891	WALLINGFORD POND RD	7/9/2018	Initial Inventory	Gravel	2.200	P	F	F	F			Partially Meets	Low	
193892	WALLINGFORD POND RD	7/9/2018	Initial Inventory	Gravel	2.700	P	F	F	F			Partially Meets	Low	
193896	WALLINGFORD POND RD	7/9/2018	Initial Inventory	Gravel	2.500	D	F	F	F			Partially Meets	Low	
197673	WHITE ROCKS PICNIC RD	7/9/2018	Initial Inventory	Gravel	2.400	P	F	P	F			Partially Meets	Low	

Seg ID	Road Name	Date	Reason	Road Type	Slope	Crown	Berm / windrow	Drainage	Conveyance	Driveway Culvert	Drainage Culvert	Status	Priority	Schedule
15954.1	DEPOT ST	9/12/2019	Initial Inventory	Paved with catch basin - O1840								Fully Meets		
15955.1	DEPOT ST	9/12/2019	Initial Inventory	Paved with catch basin - O1840								Fully Meets		
15956.1	DEPOT ST	9/12/2019	Initial Inventory	Paved with catch basin - O1840								Fully Meets		
8912.1	CARRIAGE RD	7/6/2018	Initial Inventory	Paved with open ditches	6.000			F	F	F		Fully Meets		
8913.1	CARRIAGE RD	7/6/2018	Initial Inventory	Paved with open ditches	7.700			F	F			Fully Meets		
8914.1	CARRIAGE RD	7/6/2018	Initial Inventory	Paved with open ditches	2.800			F	F			Fully Meets		
8915.1	CARRIAGE RD	7/6/2018		Paved with open ditches	6.500			F	F	F		Fully Meets		
11416.1	CHURCH ST	7/12/2018		Paved with open ditches	3.000			F	F			Fully Meets		
11417.1	CHURCH ST	7/12/2018	Initial Inventory	Paved with open ditches	3.700			F	F			Fully Meets		
11418.1	CHURCH ST	7/12/2018	Initial Inventory	Paved with open ditches	8.600			F	F			Fully Meets		
11419.1	CHURCH ST	7/12/2018	Initial Inventory	Paved with open ditches	9.200			F	F			Fully Meets		
11420.1	CHURCH ST	7/12/2018	Initial Inventory	Paved with open ditches	9.600			F	F			Fully Meets		
11421.1	CHURCH ST	7/12/2018	Initial Inventory	Paved with open ditches	10.600			F	F			Fully Meets		
11422.1	CHURCH ST	7/12/2018	Initial Inventory	Paved with open ditches	13.200			F	F			Fully Meets		
11423.1	CHURCH ST	8/27/2019	Initial Inventory	Paved with open ditches	13.300			F	N	F		Fully Meets		
11431.1	CHURCH ST	7/12/2018	Initial Inventory	Paved with open ditches	1.500			F	F			Fully Meets		
11432.1	CHURCH ST	7/12/2018	Initial Inventory	Paved with open ditches	1.000			F	F			Fully Meets		
11433.1	CHURCH ST	7/12/2018	Initial Inventory	Paved with open ditches	1.000			F	F			Fully Meets		
11526.1	CIRCULAR AV	7/11/2018	Initial Inventory	Paved with open ditches	1.800			F	F			Fully Meets		
11527.1	CIRCULAR AV	8/27/2019	Initial Inventory	Paved with open ditches	2.800			F	N			Fully Meets		
11528.1	CIRCULAR AV	7/11/2018	Initial Inventory	Paved with open ditches	3.300			F	F			Fully Meets		
11529.1	CIRCULAR AV	7/11/2018	Initial Inventory	Paved with open ditches	3.300			F	F			Fully Meets		
14413.1	CREEK RD	8/27/2019	Initial Inventory	Paved with open ditches	2.500			F	N	F		Fully Meets		
14417.1	CREEK RD	7/5/2018	Initial Inventory	Paved with open ditches	0.700			F	F			Fully Meets		
14418.1	CREEK RD	7/5/2018	Initial Inventory	Paved with open ditches	0.850			F	F			Fully Meets		
14419.1	CREEK RD	7/5/2018	Initial Inventory	Paved with open ditches	0.600			F	F			Fully Meets		
14420.1	CREEK RD	7/5/2018	Initial Inventory	Paved with open ditches	1.200			F	F			Fully Meets		
14421.1	CREEK RD	7/5/2018	Initial Inventory	Paved with open ditches	0.500			F	F			Fully Meets		
14422.1	CREEK RD	7/5/2018	Initial Inventory	Paved with open ditches	1.000			F	F			Fully Meets		
14423.1	CREEK RD	7/5/2018	Initial Inventory	Paved with open ditches	0.700			F	F			Fully Meets		
14428.1	CREEK RD	7/5/2018	Initial Inventory	Paved with open ditches	3.000			F	F			Fully Meets		
14429.1	CREEK RD	7/5/2018	Initial Inventory	Paved with open ditches	3.500			F	F			Fully Meets		
14430.1	CREEK RD	7/5/2018	Initial Inventory	Paved with open ditches	1.000			F	F			Fully Meets		
14431.1	CREEK RD	7/5/2018	Initial Inventory	Paved with open ditches	0.840			F	F			Fully Meets		
14432.1	CREEK RD	7/5/2018	Initial Inventory	Paved with open ditches	0.750			F	F			Fully Meets		

Seg ID	Road Name	Date	Reason	Road Type	Slope	Crown	Berm / windrow	Drainage	Conveyance	Driveway Culvert	Drainage Culvert	Status	Priority	Schedule
14433.1	CREEK RD	7/5/2018	Initial Inventory	Paved with open ditches	2.000			F	F			Fully Meets		
14434.1	CREEK RD	8/27/2019	Initial Inventory	Paved with open ditches	2.900			F	N	F		Fully Meets		
15672.1	DEERFIELD DR	7/6/2018	Initial Inventory	Paved with open ditches	0.300			F	F	F		Fully Meets		
15673.1	DEERFIELD DR	7/6/2018	Initial Inventory	Paved with open ditches	0.400			F	F		F	Fully Meets		
15674.1	DEERFIELD DR	7/6/2018	Initial Inventory	Paved with open ditches	2.200			F	F	F	F	Fully Meets		
19546.1	EAST STREET TOWN HWY	7/5/2018	Initial Inventory	Paved with open ditches	10.000			F	F			Fully Meets		
20178.1	ELM ST	7/11/2018		Paved with open ditches	3.700			F	F	F		Fully Meets		
20179.1	ELM ST	7/11/2018	Initial Inventory	Paved with open ditches	3.000			F	F			Fully Meets		
21855.1	FLORENCE AV	7/11/2018	Initial Inventory	Paved with open ditches	1.700			F	F			Fully Meets		
21856.1	FLORENCE AV	7/11/2018	Initial Inventory	Paved with open ditches	2.800			F	F			Fully Meets		
21857.1	FLORENCE AV	7/11/2018	Initial Inventory	Paved with open ditches	2.100			F	F			Fully Meets		
22407.1	FRANKLIN ST	7/11/2018	Initial Inventory	Paved with open ditches	2.100			F	F			Fully Meets		
26630.1	HARTSBORO RD	8/27/2019	Initial Inventory	Paved with open ditches	0.700			F	F			Fully Meets		
26631.1	HARTSBORO RD	7/6/2018	Initial Inventory	Paved with open ditches	1.800			F	F			Fully Meets		
26632.1	HARTSBORO RD	7/6/2018	Initial Inventory	Paved with open ditches	2.000			F	F			Fully Meets		
26633.1	HARTSBORO RD	7/6/2018	Initial Inventory	Paved with open ditches	2.300			F	F			Fully Meets		
26634.1	HARTSBORO RD	7/6/2018	Initial Inventory	Paved with open ditches	3.200			F	F			Fully Meets		
26635.1	HARTSBORO RD	7/6/2018	Initial Inventory	Paved with open ditches	1.500			F	F			Fully Meets		
26636.1	HARTSBORO RD	7/6/2018	Initial Inventory	Paved with open ditches	2.500			F	F			Fully Meets		
109367	HARTSBORO RD	7/6/2018	Initial Inventory	Paved with open ditches	8.000			F	F			Fully Meets		
109415	HARTSBORO RD	7/6/2018	Initial Inventory	Paved with open ditches	5.000			F	F			Fully Meets		
27670.1	HIGH ST	7/12/2018	Initial Inventory	Paved with open ditches	2.200			F	F			Fully Meets		
28284.1	HILLSIDE RD	7/12/2018	Initial Inventory	Paved with open ditches	7.000			F	F			Fully Meets		
29156.1	HOMER STONE RD	7/6/2018	Initial Inventory	Paved with open ditches	5.800			F	F			Fully Meets		
29157.1	HOMER STONE RD	7/6/2018	Initial Inventory	Paved with open ditches	4.500			F	F			Fully Meets		
29158.1	HOMER STONE RD	7/6/2018	Initial Inventory	Paved with open ditches	3.000			F	F			Fully Meets		
29161.1	HOMER STONE RD	7/6/2018	Initial Inventory	Paved with open ditches	0.600			F	F			Fully Meets		
29748.1	HULL AV	7/11/2018	Initial Inventory	Paved with open ditches	1.400			F	F			Fully Meets		
29749.1	HULL AV	7/11/2018	Initial Inventory	Paved with open ditches	14.500			F	F			Fully Meets		
29750.1	HULL AV	7/11/2018	Initial Inventory	Paved with open ditches	7.000			F	F			Fully Meets		
37883.1	MAPLE ST	7/11/2018	Initial Inventory	Paved with open ditches	3.200			F	F	F		Fully Meets		
37885.1	MAPLE ST	7/11/2018	Initial Inventory	Paved with open ditches	2.000			F	F			Fully Meets		
38931.1	MEACHAM ST	7/11/2018	Initial Inventory	Paved with open ditches	1.200			F	F			Fully Meets		
38932.1	MEACHAM ST	9/12/2019	Initial Inventory	Paved with open ditches	9.600			F	N		F	Fully Meets		
38933.1	MEACHAM ST	7/11/2018	Initial Inventory	Paved with open ditches	6.000			F	F			Fully Meets		

Seg ID	Road Name	Date	Reason	Road Type	Slope	Crown	Berm / windrow	Drainage	Conveyance	Driveway Culvert	Drainage Culvert	Status	Priority	Schedule
39093.1	MEADOW ST	7/11/2018	Initial Inventory	Paved with open ditches	0.500			F	F			Fully Meets		
40350.1	MILL ST	7/12/2018	Initial Inventory	Paved with open ditches	3.500			F	F			Fully Meets		
42936.1	N END DR	7/5/2018	Initial Inventory	Paved with open ditches	2.500			F	F			Fully Meets		
42937.1	N END DR	7/5/2018	Initial Inventory	Paved with open ditches	8.600			F	F			Fully Meets		
138751	N END DR	7/5/2018	Initial Inventory	Paved with open ditches	5.700			F	F			Fully Meets		
138752	N END DR	7/5/2018	Initial Inventory	Paved with open ditches	2.500			F	F		F	Fully Meets		
138754	N END DR	7/5/2018	Initial Inventory	Paved with open ditches	0.650			F	F			Fully Meets		
138755	N END DR	7/5/2018	Initial Inventory	Paved with open ditches	2.700			F	F			Fully Meets		
138756	N END DR	7/5/2018	Initial Inventory	Paved with open ditches	3.000			F	F		F	Fully Meets		
43809.1	NASH DR	9/12/2019	Initial Inventory	Paved with open ditches	2.800			F	N	F	F	Fully Meets		
43812.1	NASH DR	7/11/2018	Initial Inventory	Paved with open ditches	8.400			F	F	F		Fully Meets		
43813.1	NASH DR	7/11/2018	Initial Inventory	Paved with open ditches	5.100			F	F	F		Fully Meets		
45703.1	NOTTINGHILL DR	7/6/2018	Initial Inventory	Paved with open ditches	8.100			F	F	F	F	Fully Meets		
45704.1	NOTTINGHILL DR	7/6/2018		Paved with open ditches	11.500			F	F			Fully Meets		
48710.1	PEMBROKE RD	7/6/2018	Initial Inventory	Paved with open ditches	9.800			F	F	F	F	Fully Meets		
51675.1	PROSPECT ST	7/11/2018	Initial Inventory	Paved with open ditches	2.400			F	F	F		Fully Meets		
51677.1	PROSPECT ST	7/11/2018	Initial Inventory	Paved with open ditches	1.100			F	F	F		Fully Meets		
51678.1	PROSPECT ST	7/11/2018	Initial Inventory	Paved with open ditches	3.800			F	F	F		Fully Meets		
52679.1	RAILROAD ST	7/11/2018	Initial Inventory	Paved with open ditches	0.700			F	F			Fully Meets		
52680.1	RAILROAD ST	9/12/2019	Initial Inventory	Paved with open ditches	2.100			F	N			Fully Meets		
52682.1	RAILROAD ST	9/12/2019	Initial Inventory	Paved with open ditches	1.400			F	N			Fully Meets		
54773.1	RIVER ST	7/11/2018	Initial Inventory	Paved with open ditches	0.600			F	F			Fully Meets		
54774.1	RIVER ST	9/12/2019	Re Assessment	Paved with open ditches	1.300			F	N		F	Fully Meets		
54775.1	RIVER ST	7/11/2018	Initial Inventory	Paved with open ditches	0.500			F	F			Fully Meets		
54776.1	RIVER ST	7/11/2018	Initial Inventory	Paved with open ditches	0.500			F	F			Fully Meets		
55890.1	ROUTE 140 W	7/11/2018	Initial Inventory	Paved with open ditches	2.800			F	F			Fully Meets		
55892.1	ROUTE 140 W	7/9/2018	Initial Inventory	Paved with open ditches	4.000			F	F			Fully Meets		
55893.1	ROUTE 140 W	7/9/2018	Initial Inventory	Paved with open ditches	7.400			F	F			Fully Meets		
55894.1	ROUTE 140 W	7/9/2018	Initial Inventory	Paved with open ditches	10.200			F	F			Fully Meets		
55895.1	ROUTE 140 W	7/9/2018	Initial Inventory	Paved with open ditches	7.000			F	F			Fully Meets		
55896.1	ROUTE 140 W	7/9/2018	Initial Inventory	Paved with open ditches	14.400			F	F			Fully Meets		
55897.1	ROUTE 140 W	7/9/2018		Paved with open ditches	4.400			F	F			Fully Meets		
55898.1	ROUTE 140 W	7/9/2018		Paved with open ditches	2.200			F	F			Fully Meets		
55899.1	ROUTE 140 W	7/9/2018	Initial Inventory	Paved with open ditches	2.600			F	F			Fully Meets		
55900.1	ROUTE 140 W	7/9/2018	Initial Inventory	Paved with open ditches	4.000			F	F			Fully Meets		

Seg ID	Road Name	Date	Reason	Road Type	Slope	Crown	Berm / windrow	Drainage	Conveyance	Driveway Culvert	Drainage Culvert	Status	Priority	Schedule
55904.1	ROUTE 140 W	7/12/2018	Initial Inventory	Paved with open ditches	7.400			F	F			Fully Meets		
55905.1	ROUTE 140 W	7/12/2018	Initial Inventory	Paved with open ditches	5.200			F	F			Fully Meets		
55906.1	ROUTE 140 W	7/12/2018	Initial Inventory	Paved with open ditches	6.000			F	F			Fully Meets		
55907.1	ROUTE 140 W	7/12/2018	Initial Inventory	Paved with open ditches	4.500			F	F			Fully Meets		
55908.1	ROUTE 140 W	7/12/2018	Initial Inventory	Paved with open ditches	9.500			F	F			Fully Meets		
55909.1	ROUTE 140 W	7/12/2018	Initial Inventory	Paved with open ditches	5.400			F	F			Fully Meets		
55910.1	ROUTE 140 W	7/12/2018	Initial Inventory	Paved with open ditches	2.300			F	F			Fully Meets		
55911.1	ROUTE 140 W	7/12/2018	Initial Inventory	Paved with open ditches	1.200			F	F			Fully Meets		
55912.1	ROUTE 140 W	7/12/2018	Initial Inventory	Paved with open ditches	8.400			F	F			Fully Meets		
55913.1	ROUTE 140 W	7/12/2018	Initial Inventory	Paved with open ditches	8.400			F	F			Fully Meets		
55914.1	ROUTE 140 W	7/12/2018	Initial Inventory	Paved with open ditches	8.200			F	F			Fully Meets		
55915.1	ROUTE 140 W	7/12/2018	Initial Inventory	Paved with open ditches	7.300			F	F			Fully Meets		
55916.1	ROUTE 140 W	7/12/2018	Initial Inventory	Paved with open ditches	8.900			F	F			Fully Meets		
55917.1	ROUTE 140 W	7/12/2018	Initial Inventory	Paved with open ditches	8.600			F	F			Fully Meets		
55918.1	ROUTE 140 W	7/12/2018	Initial Inventory	Paved with open ditches	8.600			F	F			Fully Meets		
55919.1	ROUTE 140 W	7/12/2018	Initial Inventory	Paved with open ditches	7.300			F	F			Fully Meets		
55920.1	ROUTE 140 W	7/12/2018	Initial Inventory	Paved with open ditches	5.000			F	F			Fully Meets		
55921.1	ROUTE 140 W	7/12/2018	Initial Inventory	Paved with open ditches	1.000			F	F			Fully Meets		
55925.1	ROUTE 140 W	7/12/2018	Initial Inventory	Paved with open ditches	13.000			F	F			Fully Meets		
55926.1	ROUTE 140 W	7/12/2018	Initial Inventory	Paved with open ditches	3.500			F	F			Fully Meets		
60139.1	SHEDD PL	7/11/2018	Initial Inventory	Paved with open ditches	3.500			F	F			Fully Meets		
65291.1	TAFT TERR	7/12/2018	Initial Inventory	Paved with open ditches	0.900			F	F			Fully Meets		
65877.1	TH 68	7/6/2018	Initial Inventory	Paved with open ditches	3.200			F	F			Fully Meets		
70088.1	WALDO LN	7/6/2018	Initial Inventory	Paved with open ditches	0.500			F	F			Fully Meets		
70089.1	WALDO LN	7/6/2018	Initial Inventory	Paved with open ditches	1.800			F	F			Fully Meets		
70090.1	WALDO LN	7/6/2018	Initial Inventory	Paved with open ditches	2.300			F	F			Fully Meets		
70092.1	WALDO LN	7/6/2018	Initial Inventory	Paved with open ditches	0.500			F	F			Fully Meets		
70093.1	WALDO LN	7/6/2018	Initial Inventory	Paved with open ditches	1.200			F	F			Fully Meets		
70094.1	WALDO LN	7/6/2018	Initial Inventory	Paved with open ditches	1.400			F	F			Fully Meets		
73126.1	WICKHAM LN	7/6/2018	Initial Inventory	Paved with open ditches	0.400			F	F			Fully Meets		
6484	BEAR MOUTAIN RD	7/11/2018	Initial Inventory	Gravel	1.400	F	F	F	F			Fully Meets		
6485	BEAR MOUTAIN RD	7/11/2018		Gravel	5.200	F	F	F	F			Fully Meets		
6487	BEAR MOUTAIN RD	7/11/2018	Initial Inventory	Gravel	5.400	F	F	F	F			Fully Meets		
6488	BEAR MOUTAIN RD	7/11/2018	Initial Inventory	Gravel	12.000	F	F	F	F	F		Fully Meets		
6491	BEAR MOUTAIN RD	7/11/2018	Initial Inventory	Gravel	4.000	F	F	F	F	F		Fully Meets		

Seg ID	Road Name	Date	Reason	Road Type	Slope	Crown	Berm / windrow	Drainage	Conveyance	Driveway Culvert	Drainage Culvert	Status	Priority	Schedule
8726	BILL FOX RD	8/8/2019	Re Assessment	Gravel	2.100	F	F	F	N			Fully Meets		
8728	BILL FOX RD	7/10/2018	Initial Inventory	Gravel	1.400	F	F	F	F			Fully Meets		
9288	BIXBY RD	7/11/2018	Initial Inventory	Gravel	3.500	F	F	F	F			Fully Meets		
9715	BLACKWOOD RD	7/10/2018	Initial Inventory	Gravel	1.200	F	F	F	F			Fully Meets		
9723	BLACKWOOD RD	7/9/2018	Initial Inventory	Gravel	4.600	F	F	F	F			Fully Meets		
9727	BLACKWOOD RD	7/10/2018	Initial Inventory	Gravel	2.400	F	F	F	F			Fully Meets		
18783	CARRARA CAMP RD	7/10/2018	Initial Inventory	Gravel	1.400	F	F	F	F			Fully Meets		
18784	CARRARA CAMP RD	7/10/2018	Initial Inventory	Gravel	3.800	F	F	F	F			Fully Meets		
20222	CENTERVILLE RD	8/8/2019	Re Assessment	Gravel	4.000	F	F	F	N			Fully Meets		
20223	CENTERVILLE RD	7/10/2018	Initial Inventory	Gravel	3.500	F	F	F	F			Fully Meets		
20224	CENTERVILLE RD	8/8/2019	Initial Inventory	Gravel	2.400	F	F	F	N			Fully Meets		
20226	CENTERVILLE RD	7/10/2018	Initial Inventory	Gravel	4.800	F	F	F	F	F		Fully Meets		
20227	CENTERVILLE RD	7/10/2018	Initial Inventory	Gravel	1.300	F	F	F	F			Fully Meets		
20230	CENTERVILLE RD	7/10/2018	Initial Inventory	Gravel	4.600	F	F	F	F			Fully Meets		
20231	CENTERVILLE RD	7/10/2018	Initial Inventory	Gravel	3.000	F	F	F	F			Fully Meets		
20804	CHAPIN RD	7/10/2018	Initial Inventory	Gravel	2.800	F	F	F	F			Fully Meets		
20808	CHAPIN RD	7/10/2018	Initial Inventory	Gravel	6.000	F	F	F	F			Fully Meets		
20809	CHAPIN RD	7/10/2018	Initial Inventory	Gravel	4.500	F	F	F	F			Fully Meets		
20810	CHAPIN RD	7/10/2018	Initial Inventory	Gravel	2.600	F	F	F	F			Fully Meets		
20811	CHAPIN RD	7/10/2018	Initial Inventory	Gravel	2.300	F	F	F	F			Fully Meets		
20813	CHAPIN RD	7/10/2018	Initial Inventory	Gravel	2.600	F	F	F	F			Fully Meets		
25576	COOK DR	7/6/2018	Initial Inventory	Gravel	5.200	F	F	F	F			Fully Meets		
25578	COOK DR	7/6/2018	Initial Inventory	Gravel	5.000	F	F	F	F			Fully Meets		
25583	COOK DR	7/6/2018	Initial Inventory	Gravel	2.700	F	F	F	F			Fully Meets		
25930	COOTEY LN	7/12/2018	Initial Inventory	Gravel	4.600	F	F	F	F			Fully Meets		
28950	CROSS RD	7/9/2018	Initial Inventory	Gravel	5.800	F	F	F	F			Fully Meets		
28951	CROSS RD	7/9/2018	Initial Inventory	Gravel	3.100	F	F	F	F			Fully Meets		
28952	CROSS RD	7/9/2018	Initial Inventory	Gravel	5.000	F	F	F	F			Fully Meets		
31593	DAWSON HILL RD	7/10/2018	Initial Inventory	Gravel	0.600	F	F	F	F			Fully Meets		
31594	DAWSON HILL RD	7/10/2018	Initial Inventory	Gravel	1.500	F	F	F	F			Fully Meets		
31603	DAWSON HILL RD	7/2/2019	Re Assessment	Gravel	5.300	F	F	F	F	F	F	Fully Meets		
31604	DAWSON HILL RD	7/10/2018	Initial Inventory	Gravel	1.500	F	F	F	F		F	Fully Meets		
31607	DAWSON HILL RD	7/10/2018	Initial Inventory	Gravel	2.000	F	F	F	F			Fully Meets		
31612	DAWSON HILL RD	7/10/2018	Initial Inventory	Gravel	2.400	F	F	F	F			Fully Meets		
31614	DAWSON HILL RD	7/10/2018	Initial Inventory	Gravel	3.700	F	F	F	F			Fully Meets		

Seg ID	Road Name	Date	Reason	Road Type	Slope	Crown	Berm / windrow	Drainage	Conveyance	Driveway Culvert	Drainage Culvert	Status	Priority	Schedule
91538	DUGWAY RD	7/5/2018	Initial Inventory	Gravel	4.900	F	F	F	F			Fully Meets		
91541	DUGWAY RD	7/5/2018	Initial Inventory	Gravel	4.700	F	F	F	F			Fully Meets		
93911	EARL WADE RD	7/11/2018	Initial Inventory	Gravel	1.500	F	F	F	F			Fully Meets		
94467	EAST ST	7/5/2018	Initial Inventory	Gravel	0.300	F	F	F	F			Fully Meets		
94478	EAST ST	7/5/2018	Initial Inventory	Gravel	3.000	F	F	F	F			Fully Meets		
95423	ELM ST	7/11/2018	Initial Inventory	Gravel	2.800	F	F	F	F			Fully Meets		
99810	FREEMAN BROOK RD	7/10/2018	Initial Inventory	Gravel	2.700	F	F	F	F			Fully Meets		
99811	FREEMAN BROOK RD	7/10/2018	Initial Inventory	Gravel	2.800	F	F	F	F			Fully Meets		
99812	FREEMAN BROOK RD	7/10/2018	Initial Inventory	Gravel	7.800	F	F	F	F			Fully Meets		
105567	GREEN HILL LN	8/27/2019	Initial Inventory	Gravel	3.700	F	F	F	N			Fully Meets		
105569	GREEN HILL LN	8/27/2019	Initial Inventory	Gravel	3.000	F	F	F	N	F		Fully Meets		
105570	GREEN HILL LN	8/27/2019	Initial Inventory	Gravel	2.600	F	F	F	N	F		Fully Meets		
109371	HARTSBORO RD	8/27/2019	Re Assessment	Gravel	5.200	F	F	F	N			Fully Meets		
109372	HARTSBORO RD	7/6/2018		Gravel	3.600	F	F	F	F			Fully Meets		
109378	HARTSBORO RD	7/6/2018		Gravel	1.200	F	F	F	F			Fully Meets		
109379	HARTSBORO RD	7/6/2018	Initial Inventory	Gravel	1.100	F	F	F	F			Fully Meets		
109380	HARTSBORO RD	7/6/2018	Initial Inventory	Gravel	2.600	F	F	F	F			Fully Meets		
109394	HARTSBORO RD	7/6/2018		Gravel	2.700	F	F	F	F			Fully Meets		
109395	HARTSBORO RD	7/6/2018	Initial Inventory	Gravel	5.000	F	F	F	F			Fully Meets		
109399	HARTSBORO RD	7/6/2018	Initial Inventory	Gravel	4.300	F	F	F	F			Fully Meets		
109400	HARTSBORO RD	8/27/2019	Re Assessment	Gravel	5.400	F	F	F	N		F	Fully Meets		
109403	HARTSBORO RD	7/6/2018	Initial Inventory	Gravel	1.700	F	F	F	F			Fully Meets		
109407	HARTSBORO RD	7/6/2018	Initial Inventory	Gravel	4.200	F	F	F	F			Fully Meets		
109408	HARTSBORO RD	8/27/2019	Initial Inventory	Gravel	1.500	F	F	F	N			Fully Meets		
109413	HARTSBORO RD	7/6/2018		Gravel	0.500	F	F	F	F			Fully Meets		
109701	HATEFUL HILL RD	7/10/2018	Initial Inventory	Gravel	1.200	F	F	F	F			Fully Meets		
109705	HATEFUL HILL RD	7/10/2018	Initial Inventory	Gravel	2.800	F	F	F	F			Fully Meets		
109706	HATEFUL HILL RD	7/10/2018	Initial Inventory	Gravel	4.500	F	F	F	F			Fully Meets		
109861	HAVEN HILL RD	8/27/2019	Re Assessment	Gravel	2.000	F	F	F	N	F		Fully Meets		
109866	HAVEN HILL RD	7/5/2018	Initial Inventory	Gravel	3.700	F	F	F	F			Fully Meets		
109867	HAVEN HILL RD	8/27/2019	Re Assessment	Gravel	2.800	F	F	F	F			Fully Meets		
109984	HAWKINS RD	7/10/2018		Gravel	1.600	F	F	F	F			Fully Meets		
109991	HAWKINS RD	7/11/2018	Initial Inventory	Gravel	8.500	F	F	F	F	F	F	Fully Meets		
113754	HOMER STONE RD	7/6/2018	Initial Inventory	Gravel	4.000	F	F	F	F			Fully Meets		
113757	HOMER STONE RD	7/6/2018	Initial Inventory	Gravel	0.800	F	F	F	F			Fully Meets		

Seg ID	Road Name	Date	Reason	Road Type	Slope	Crown	Berm / windrow	Drainage	Conveyance	Driveway Culvert	Drainage Culvert	Status	Priority	Schedule
113758	HOMER STONE RD	7/6/2018	Initial Inventory	Gravel	2.300	F	F	F	F			Fully Meets		
113759	HOMER STONE RD	7/6/2018	Initial Inventory	Gravel	2.300	F	F	F	F			Fully Meets		
115825	ICE BED RD	7/6/2018	Initial Inventory	Gravel	4.400	F	F	F	F			Fully Meets		
116408	JACK PERRY RD	8/27/2019	Initial Inventory	Gravel	8.200	F	F	F	N		F	Fully Meets		
119708	KENT FARM RD	8/8/2019	Initial Inventory	Gravel	2.500	F	F	F	N			Fully Meets		
119716	KENT FARM RD	8/8/2019	Initial Inventory	Gravel	3.800	F	F	F	N			Fully Meets		
130134	MARANVILLE RD	7/11/2018	Initial Inventory	Gravel	0.900	F	F	F	F			Fully Meets		
130135	MARANVILLE RD	7/11/2018	Initial Inventory	Gravel	1.600	F	F	F	F			Fully Meets		
130136	MARANVILLE RD	7/11/2018	Initial Inventory	Gravel	0.900	F	F	F	F			Fully Meets		
130137	MARANVILLE RD	7/11/2018	Initial Inventory	Gravel	1.100	F	F	F	F			Fully Meets		
130138	MARANVILLE RD	7/11/2018	Initial Inventory	Gravel	0.200	F	F	F	F			Fully Meets		
130139	MARANVILLE RD	7/11/2018	Initial Inventory	Gravel	4.500	F	F	F	F			Fully Meets		
130144	MARANVILLE RD	7/11/2018	Initial Inventory	Gravel	9.500	F	F	F	F			Fully Meets		
134930	MOONEY RD	7/9/2018	Initial Inventory	Gravel	14.000	F	F	F	F		F	Fully Meets		
145588	OLD TOWN FARM WY	7/11/2018	Initial Inventory	Gravel	4.400	F	F	F	F			Fully Meets		
145712	OLD TURNPIKE RD	7/10/2018	Initial Inventory	Gravel	2.100	F	F	F	F			Fully Meets		
145713	OLD TURNPIKE RD	7/10/2018	Initial Inventory	Gravel	7.200	F	F	F	F			Fully Meets		
145714	OLD TURNPIKE RD	7/10/2018	Initial Inventory	Gravel	15.500	F	F	F	F			Fully Meets		
145715	OLD TURNPIKE RD	7/2/2019	Re Assessment	Gravel	1.000	F	F	F	N			Fully Meets		
147735	PARKER RD	7/10/2018	Initial Inventory	Gravel	3.600	F	F	F	F		F	Fully Meets		
147736	PARKER RD	7/10/2018	Initial Inventory	Gravel	2.000	F	F	F	F			Fully Meets		
147737	PARKER RD	7/10/2018	Initial Inventory	Gravel	0.500	F	F	F	F			Fully Meets		
147739	PARKER RD	7/10/2018	Initial Inventory	Gravel	3.000	F	F	F	F			Fully Meets		
147746	PARKER RD	7/10/2018	Initial Inventory	Gravel	4.000	F	F	F	F			Fully Meets		
147747	PARKER RD	7/10/2018	Initial Inventory	Gravel	7.700	F	F	F	F			Fully Meets		
158946	ROARING BROOK LN	8/27/2019	Initial Inventory	Gravel	3.100	F	F	F	N			Fully Meets		
159862	ROGERS FARM RD	8/27/2019	Initial Inventory	Gravel	2.600	F	F	F	N	F		Fully Meets		
165325	SENECAL WY	8/8/2019	Initial Inventory	Gravel	4.400	F	F	F	N			Fully Meets		
165326	SENECAL WY	8/8/2019	Initial Inventory	Gravel	2.800	F	F	F	N			Fully Meets		
165327	SENECAL WY	8/8/2019	Initial Inventory	Gravel	4.800	F	F	F	N			Fully Meets		
165452	SEWARD HILL RD	7/11/2018	Initial Inventory	Gravel	2.000	F	F	F	F			Fully Meets		
64345.1	SUGAR HILL RD	7/10/2018		Gravel	8.000	F	F	F	F			Fully Meets		
64346.1	SUGAR HILL RD	7/10/2018	Initial Inventory	Gravel	1.800	F	F	F	F			Fully Meets		
64347.1	SUGAR HILL RD	7/10/2018	Initial Inventory	Gravel	5.000	F	F	F	F		F	Fully Meets		
174253	SUGAR HILL RD	7/10/2018	Initial Inventory	Gravel	10.500	F	F	F	F		F	Fully Meets		

Seg ID	Road Name	Date	Reason	Road Type	Slope	Crown	Berm / windrow	Drainage	Conveyance	Driveway Culvert	Drainage Culvert	Status	Priority	Schedule
174259	SUGAR HILL RD	7/9/2018	Initial Inventory	Gravel	6.800	F	F	F	F	F		Fully Meets		
174260	SUGAR HILL RD	7/9/2018	Initial Inventory	Gravel	4.200	F	F	F	F		F	Fully Meets		
174262	SUGAR HILL RD	7/9/2018	Initial Inventory	Gravel	1.700	F	F	F	F			Fully Meets		
174264	SUGAR HILL RD	7/9/2018	Initial Inventory	Gravel	4.900	F	F	F	F			Fully Meets		
174274	SUGAR HILL RD	7/10/2018	Initial Inventory	Gravel	0.700	F	F	F	F			Fully Meets		
174285	SUGAR HILL RD	7/10/2018	Initial Inventory	Gravel	6.100	F	F	F	F		F	Fully Meets		
174286	SUGAR HILL RD	7/10/2018	Initial Inventory	Gravel	8.000	F	F	F	F	F		Fully Meets		
174295	SUGAR HILL RD	7/9/2018	Initial Inventory	Gravel	6.800	F	F	F	F			Fully Meets		
174309	SUGAR HILL RD	7/9/2018	Initial Inventory	Gravel	8.300	F	F	F	F	F		Fully Meets		
174310	SUGAR HILL RD	7/9/2018	Initial Inventory	Gravel	12.300	F	F	F	F			Fully Meets		
182728	TH 47	7/5/2018	Initial Inventory	Gravel	6.600	F	F	F	F			Fully Meets		
182732	TH 47	7/5/2018	Initial Inventory	Gravel	8.500	F	F	F	F			Fully Meets		
182733	TH 47	7/5/2018	Initial Inventory	Gravel	8.000	F	F	F	F		F	Fully Meets		
182734	TH 47	7/5/2018	Initial Inventory	Gravel	6.800	F	F	F	F		F	Fully Meets		
185602	TIFFT RD	7/6/2018	Initial Inventory	Gravel	3.000	F	F	F	F			Fully Meets		
185610	TIFFT RD	7/6/2018	Initial Inventory	Gravel	5.200	F	F	F	F			Fully Meets		
185611	TIFFT RD	7/6/2018	Initial Inventory	Gravel	4.700	F	F	F	F			Fully Meets		
192632	W HILL RD	7/9/2018	Initial Inventory	Gravel	5.400	F	F	F	F		F	Fully Meets		
192633	W HILL RD	7/9/2018	Initial Inventory	Gravel	8.800	F	F	F	F			Fully Meets		
192634	W HILL RD	7/9/2018	Initial Inventory	Gravel	8.400	F	F	F	F			Fully Meets		
192635	W HILL RD	7/9/2018	Initial Inventory	Gravel	1.400	F	F	F	F			Fully Meets		
192636	W HILL RD	7/9/2018	Initial Inventory	Gravel	4.500	F	F	F	F		F	Fully Meets		
192637	W HILL RD	7/9/2018	Initial Inventory	Gravel	8.000	F	F	F	F		F	Fully Meets		
192640	W HILL RD	7/9/2018	Initial Inventory	Gravel	2.400	F	F	F	F			Fully Meets		
192642	W HILL RD	7/9/2018	Initial Inventory	Gravel	8.700	F	F	F	F			Fully Meets		
192647	W HILL RD	7/9/2018	Initial Inventory	Gravel	4.500	F	F	F	F	F	F	Fully Meets		
192653	W HILL RD	7/9/2018	Initial Inventory	Gravel	5.600	F	F	F	F			Fully Meets		
192654	W HILL RD	7/9/2018	Initial Inventory	Gravel	10.000	F	F	F	F		F	Fully Meets		
192655	W HILL RD	7/9/2018	Initial Inventory	Gravel	6.300	F	F	F	F		F	Fully Meets		
192656	W HILL RD	7/9/2018	Initial Inventory	Gravel	12.000	F	F	F	F		F	Fully Meets		
192657	W HILL RD	7/9/2018	Initial Inventory	Gravel	8.400	F	F	F	F	F	F	Fully Meets		
192658	W HILL RD	7/5/2018	Initial Inventory	Gravel	8.800	F	F	F	F		F	Fully Meets		
192660	W HILL RD	7/5/2018	Initial Inventory	Gravel	3.100	F	F	F	F			Fully Meets		
192666	W HILL RD	7/5/2018	Initial Inventory	Gravel	2.000	F	F	F	F		F	Fully Meets		
192667	W HILL RD	7/5/2018	Initial Inventory	Gravel	3.800	F	F	F	F			Fully Meets		

Seg ID	Road Name	Date	Reason	Road Type	Slope	Crown	Berm / windrow	Drainage	Conveyance	Driveway Culvert	Drainage Culvert	Status	Priority	Schedule
192668	W HILL RD	7/5/2018	Initial Inventory	Gravel	3.700	F	F	F	F			Fully Meets		
192669	W HILL RD	7/5/2018	Initial Inventory	Gravel	2.700	F	F	F	F			Fully Meets		
192670	W HILL RD	7/5/2018	Initial Inventory	Gravel	3.900	F	F	F	F			Fully Meets		
192672	W HILL RD	7/5/2018	Initial Inventory	Gravel	5.400	F	F	F	F			Fully Meets		
192673	W HILL RD	7/5/2018		Gravel	6.200	F	F	F	F		F	Fully Meets		
192674	W HILL RD	6/14/2019	Re Assessment	Gravel	6.500	F	F	F	F	F		Fully Meets		
192675	W HILL RD	7/5/2018	Initial Inventory	Gravel	5.400	F	F	F	F			Fully Meets		
192681	W HILL RD	6/14/2019	Re Assessment	Gravel	5.800	F	F	F	N		F	Fully Meets		
192691	W HILL RD	7/9/2018	Initial Inventory	Gravel	3.600	F	F	F	F			Fully Meets		
192692	W HILL RD	7/6/2018	Initial Inventory	Gravel	3.500	F	F	F	F			Fully Meets		
192698	W HILL RD	7/6/2018	Initial Inventory	Gravel	4.000	F	F	F	F			Fully Meets		
192699	W HILL RD	7/6/2018	Initial Inventory	Gravel	5.400	F	F	F	F			Fully Meets		
193883	WALLINGFORD POND RD	8/9/2019	Initial Inventory	Gravel	1.000	F	F	F	N			Fully Meets		
193884	WALLINGFORD POND RD	7/9/2018	Initial Inventory	Gravel	1.000	F	F	F	F			Fully Meets		
193887	WALLINGFORD POND RD	7/9/2018		Gravel	1.600	F	F	F	F			Fully Meets		
193888	WALLINGFORD POND RD	7/9/2018	Initial Inventory	Gravel	0.500	F	F	F	F			Fully Meets		
193890	WALLINGFORD POND RD	7/9/2018	Initial Inventory	Gravel	1.800	F	F	F	F			Fully Meets		
193893	WALLINGFORD POND RD	7/9/2018	Initial Inventory	Gravel	2.100	F	F	F	F			Fully Meets		
193895	WALLINGFORD POND RD	7/9/2018	Initial Inventory	Gravel	3.700	F	F	F	F	F		Fully Meets		
193898	WALLINGFORD POND RD	7/9/2018		Gravel	5.700	F	F	F	F			Fully Meets		
193902	WALLINGFORD POND RD	7/9/2018		Gravel	4.800	F	F	F	F	F		Fully Meets		
115818	ICE BED RD	8/27/2019	Initial Inventory	Class 4	3.400							Fully Meets		
115826	ICE BED RD	8/27/2019	Initial Inventory	Class 4	4.400							Fully Meets		
115827	ICE BED RD	8/27/2019	Initial Inventory	Class 4	3.500							Fully Meets		
115828	ICE BED RD	8/27/2019	Initial Inventory	Class 4	2.700							Fully Meets		
116409	JACK PERRY RD	8/27/2019	Initial Inventory	Class 4	8.100							Fully Meets		
180591	TH 28	8/9/2019	Initial Inventory	Class 4	2.050							Fully Meets		
180596	TH 28	8/9/2019	Initial Inventory	Class 4	11.920							Fully Meets		
180597	TH 28	8/9/2019	Initial Inventory	Class 4	7.980							Fully Meets		
180598	TH 28	8/9/2019	Initial Inventory	Class 4	1.910							Fully Meets		
180599	TH 28	8/9/2019	Initial Inventory	Class 4	5.170							Fully Meets		
180600	TH 28	8/9/2019	Initial Inventory	Class 4	8.630							Fully Meets		
180601	TH 28	8/9/2019	Initial Inventory	Class 4	13.810							Fully Meets		
180602	TH 28	8/9/2019	Initial Inventory	Class 4	7.460							Fully Meets		
181464	TH 35	8/30/2019	Initial Inventory	Class 4	1.700							Fully Meets		

Seg ID	Road Name	Date	Reason	Road Type	Slope	Crown	Berm / windrow	Drainage	Conveyance	Driveway Culvert	Drainage Culvert	Status	Priority	Schedule
181466	TH 35	8/30/2019	Initial Inventory	Class 4	4.100							Fully Meets		
181467	TH 35	8/30/2019	Initial Inventory	Class 4	3.800							Fully Meets		
181468	TH 35	8/30/2019	Initial Inventory	Class 4	7.700							Fully Meets		
181469	TH 35	8/30/2019	Initial Inventory	Class 4	4.100							Fully Meets		
181470	TH 35	8/30/2019	Initial Inventory	Class 4	5.000							Fully Meets		
181479	TH 35	8/30/2019	Initial Inventory	Class 4	1.800							Fully Meets		
181863	TH 38	8/9/2019	Initial Inventory	Class 4	4.360							Fully Meets		
181868	TH 38	8/9/2019	Initial Inventory	Class 4	6.540							Fully Meets		
181947	TH 39	8/9/2019	Initial Inventory	Class 4	9.730							Fully Meets		
183321	TH 55	8/9/2019	Initial Inventory	Class 4	4.050							Fully Meets		
183322	TH 55	8/9/2019	Initial Inventory	Class 4	2.140							Fully Meets		
183798	TH 62	8/9/2019	Initial Inventory	Class 4	7.430							Fully Meets		

Summary of RRPC Field Determined Adjustments

8727.0	BILL FOX RD	Road segment was deleted because it is not hydrologically-connected
16618.0	BUTTON HILL RD	Road segment was determined to be in Shrewsbury
16669.0	BUTTON HILL RD	Road segment was not found in ArcGIS Collector app
25577.0	COOK DR	Road segment was deleted because there is no longer a road
19537.1	EAST ST	Road segment was not found in ArcGIS Collector app
96111.0	EZRA STONE RD	Road segment was determined to be in Tinmouth
99809.0	FREEMAN BROOK RD	Road segment was determined to be in Shrewsbury
105568.0	GREEN HILL LN	Road segment was not found in ArcGIS Collector app
109982.0	HAWKINS RD	Road segment was deleted because it is a private drive
27212.1	HENRY'S KNOLL	Road segment was added as hydrologically-connected
114092.0	HOPPER RD	Road segment was deleted because it is a private road
116407.0	JACK PERRY RD	Road segment was deleted because there is no longer a road
116410.0	JACK PERRY RD	Road segment was deleted because there is no longer a road
37884.1	MAPLE ST	Road segment was not found in ArcGIS Collector app
147734.0	PARKER RD	Road segment was not found in ArcGIS Collector app
51676.1	PROSPECT ST	Road segment was not found in ArcGIS Collector app
159864.0	ROGERS FARM RD	Road segment was deleted because it is a private road
55889.1	ROUTE 140	Road segment was determined to be in Tinmouth
55891.1	ROUTE 140 W	Road segment was not found in ArcGIS Collector app
59884.1	SEWARD HILL RD	Road segment was added as hydrologically-connected
185852.0	TINMOUTH POND RD	Road segment was deleted because there is no longer a road